



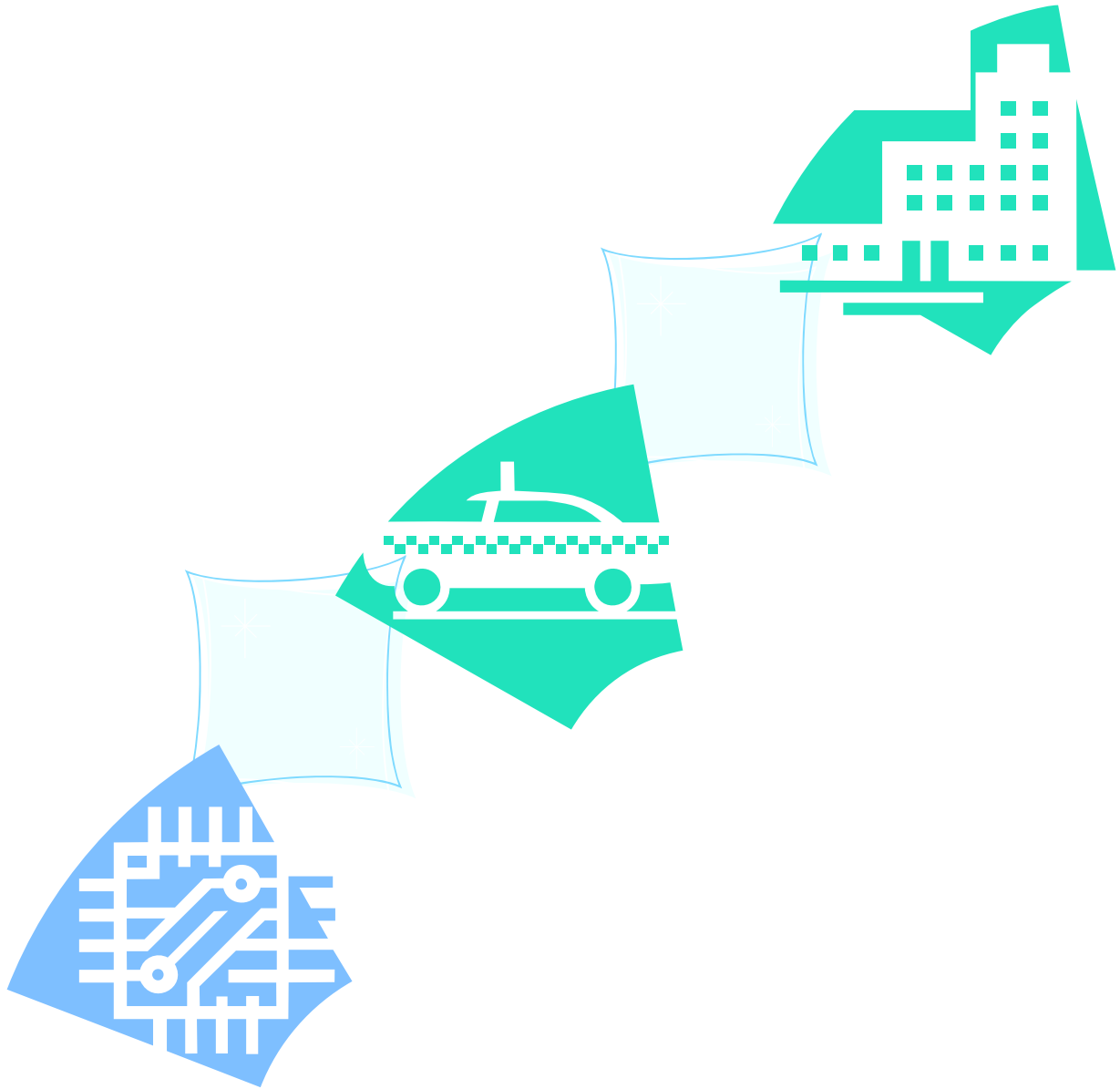
HESTORE.HU

elektronikai alkatrész áruház

EN: This Datasheet is presented by the manufacturer.

Please visit our website for pricing and availability at www.hestore.hu.

SIM300D EVB User Guide



Document Name:	SIM300D EVB User Guide
Version:	2.01
Date:	2006-07-21
DocId:	SIM300D-EVB_UGD_V2.01
Status:	Release

General Notes

Simcom offers this information as a service to its customers, to support application and engineering efforts that use the products designed by Simcom. The information provided is based upon requirements specifically provided to Simcom by the customers. Simcom has not undertaken any independent search for additional relevant information, including any information that may be in the customer’s possession. Furthermore, system validation of this product designed by Simcom within a larger electronic system remains the responsibility of the customer or the customer’s system integrator. All specifications supplied herein are subject to change.

Copyright

This document contains proprietary technical information which is the property of SIMCOM Limited., copying of this document and giving it to others and the using or communication of the contents thereof, are forbidden without express authority. Offenders are liable to the payment of damages. All rights reserved in the event of grant of a patent or the registration of a utility model or design. All specification supplied herein are subject to change without notice at any time.

Copyright © SIMCOM Limited. 2006

Contents

Contents	3
Version History	4
1. SIM300D EVB.....	5
2. EVB accessory	7
3. Accessory Interface.....	8
3.1 Power Interface	8
3.2 Audio Interface.....	9
3.3 SIM card interface.....	10
3.4 Antenna Interface	10
3.5 RS232 Interface.....	11
3.6 Operating Status LED	12
4. Test Interface.....	13
4.1 Serial Interface	13
4.2 J2---GPIO.....	14
4.3 J3---LCD & I/O.....	15
5. EVB and accessory equipment.....	16
6. Illustration:	16
6.1 Running:.....	16
6.2 Connecting Net and calling	17
6.3 Downloading.....	17
6.4 Turns off.....	17
6.5 Charging.....	17
7. 60 PIN assignment of DIP connector of EVB board.....	18

Figure Index

FIGURE 1: EVB TOP VIEW	5
FIGURE 2: EVB BOTTOM VIEW.....	6
FIGURE 3: EVB ACCESSORY.....	7
FIGURE 4: POWER INTERFACE.....	8
FIGURE 5: AUDIO INTERFACE	9
FIGURE 6: SIM CARD INTERFACE.....	10
FIGURE 7: ANTENNA INTERFACE	10
FIGURE 8: SERIAL PORTS.....	11
FIGURE 9: STATUSLED	12
FIGURE 10: TEST INTERFACE OVERVIEW	13
FIGURE 11: J1 INTERFACE.....	13
FIGURE 12: J2 INTERFACE	14
FIGURE 13: J3 INTERFACE	15
FIGURE 14: EVB AND ACCESSORY EQUIPMENT	16
FIGURE 15: DIP CONNECTOR OF EVB BOARD	18

Version History

Data	Version	Description of change	Author
2006-4-12	1.00	Origin	Qianhuai
2006-6-12	1.01	Update the figure in the document	Qianhuai
2006-7-21	2.01		

SCOPE

This document give the usage of SIM300D EVB, user can get useful info about the SIM300D EVB quickly through this document.

This document is subject to change without notice at any time.

1. SIM300D EVB

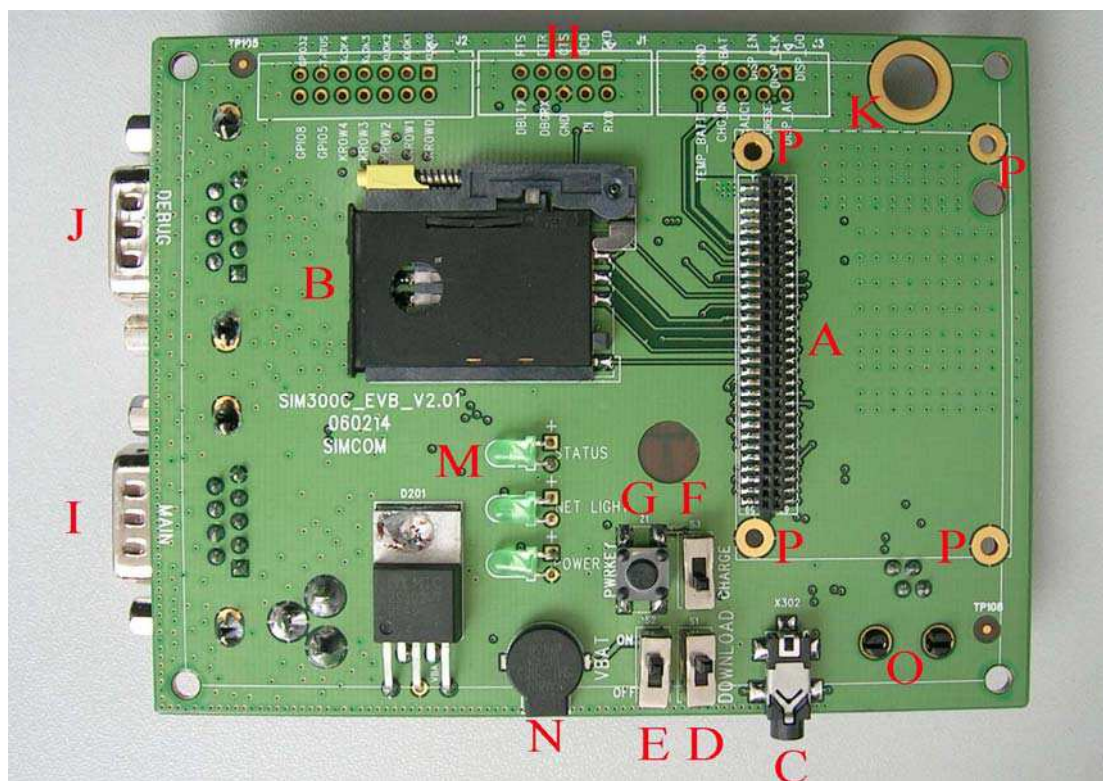


Figure 1: EVB TOP view

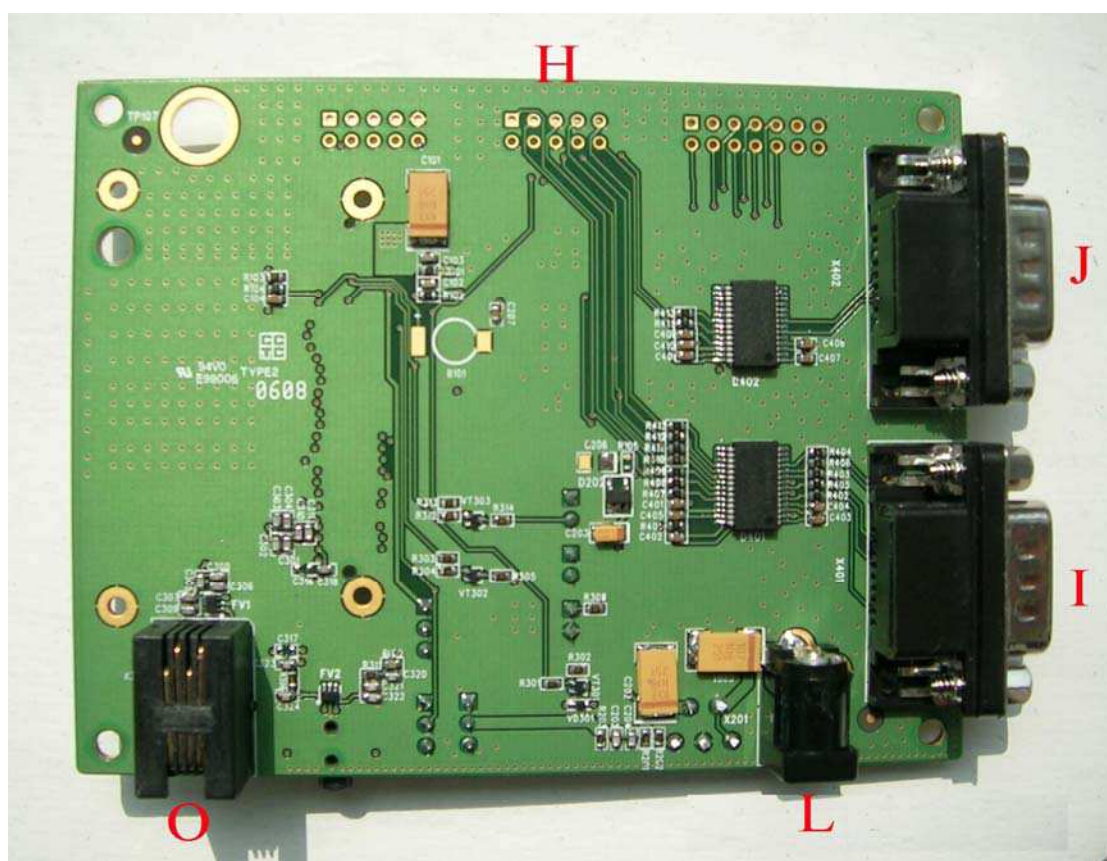


Figure 2: EVB BOTTOM view

- A: SIM300DTE with SIM300D module interface
- B: SIM card interface
- C: headset interface
- D: Download switch, turn on or off download function
- E: VBAT switch, switch the voltage source from the adaptor or external battery
- F: VCHG ON/OFF control (shifter S3)
- G: PWRKEY key, turn on or turn off SIM300D
- H: main and debug serial port
- I: MAIN serial port for downloading, AT command transmitting, data exchanging
- J: DEBUG serial port
- L: source adapter interface
- M: light
- N: buzzer
- O: headphones interface

2. EVB accessory

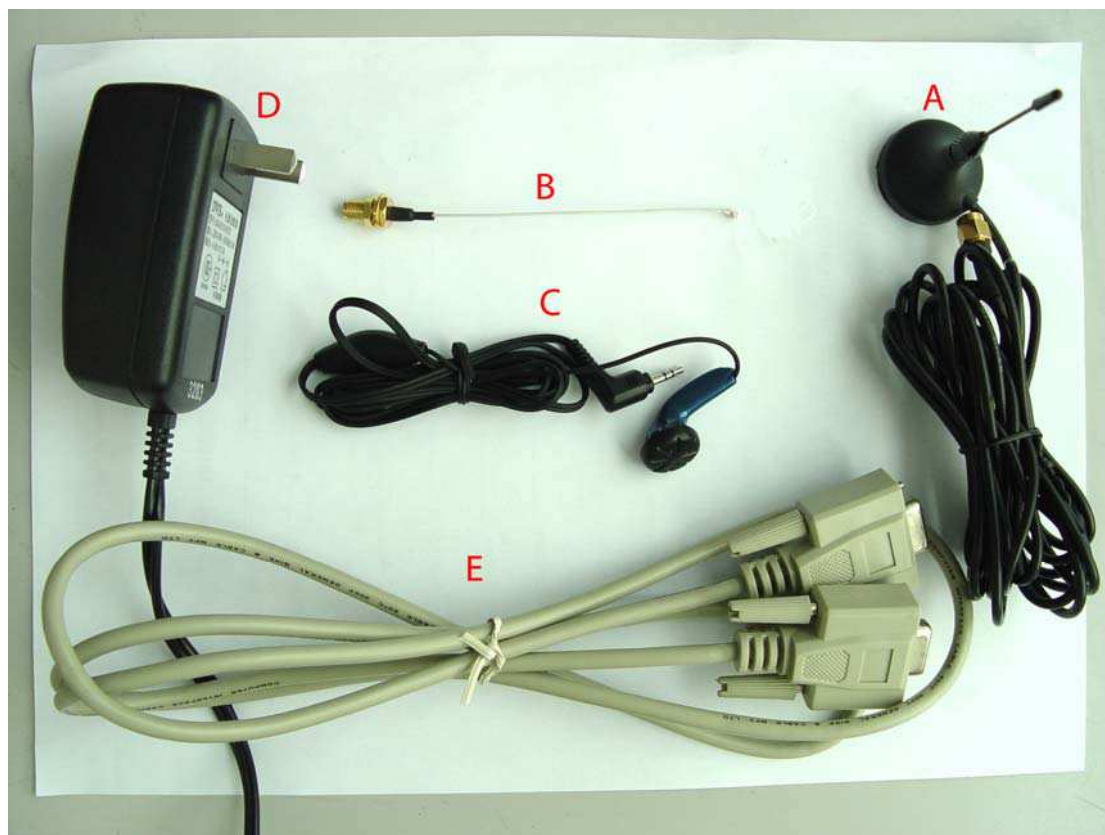


Figure 3: EVB accessory

- A: antenna
- B: antenna transmit line
- C: headset
- D: 5V DC source adapter
- E: serial port line

3. Accessory Interface

3.1 Power Interface

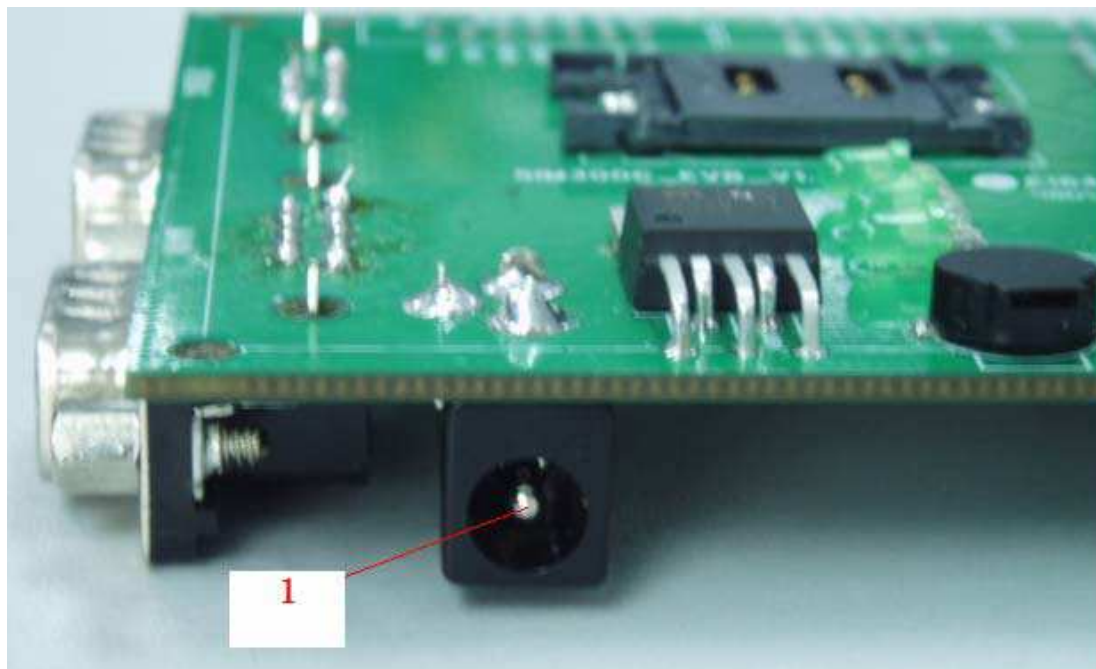


Figure 4: Power Interface

Pin	Signal	I/O	Description
1	Adapter input	I	5V/2.5A DC source input

3.2 Audio Interface

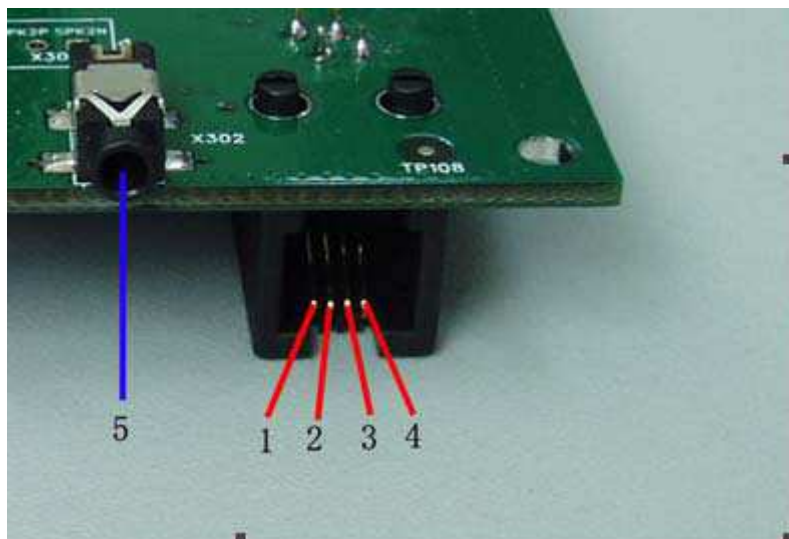


Figure 5: Audio Interface

Headset interface:

Pin	Signal	I/O	Description
1	MIC1P	I	Positive microphone input
2	SPK1P	O	Positive receiver output
3	SPK1N	O	Negative receiver output
4	MIC1N	I	Negative microphone input

Earphone interface:

Pin	Signal	Input/Output	Description
5	MIC2P&SPK2P	I/O	Auxiliary positive input and output

3.3 SIM card interface

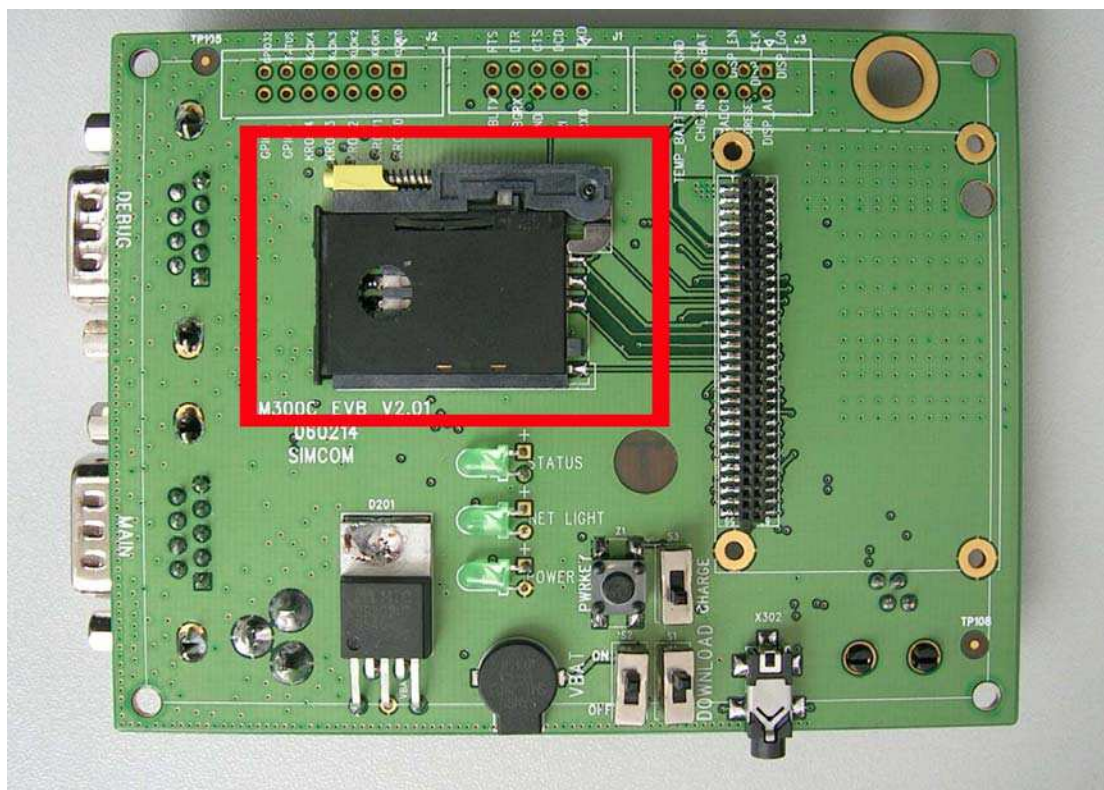


Figure 6: SIM card interface

3.4 Antenna Interface



Figure 7: Antenna Interface

3.5 RS232 Interface

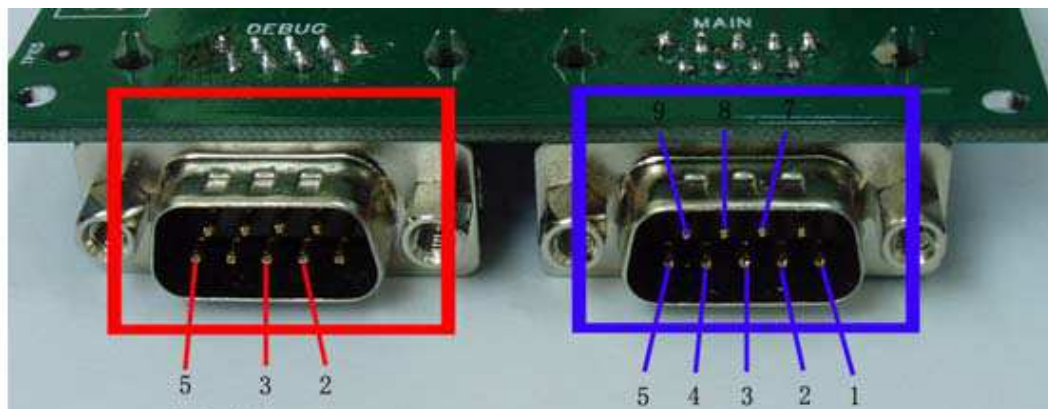


Figure 8: Serial Ports

Serial Port 1——MAIN Interface

Serial Port 2——DEGUG Interface

Main Interface:

Pin	Signal	I/O	Description
1	DCD	O	Data carrier detection
2	TXD	O	Transmit data
3	RXD	I	Receive data
4	DTR	I	Data Terminal Ready
5	GND		GND
7	RTS	I	Request to Send
8	CTS	O	Clear to Send
9	RI	O	Ring Indicator

Debug Interface:

Pin	Signal	I/O	Description
2	DEBUG_TX	O	Transmit data
3	DEBUG_RX	I	Receive data
5	GND		GND

3.6 Operating Status LED

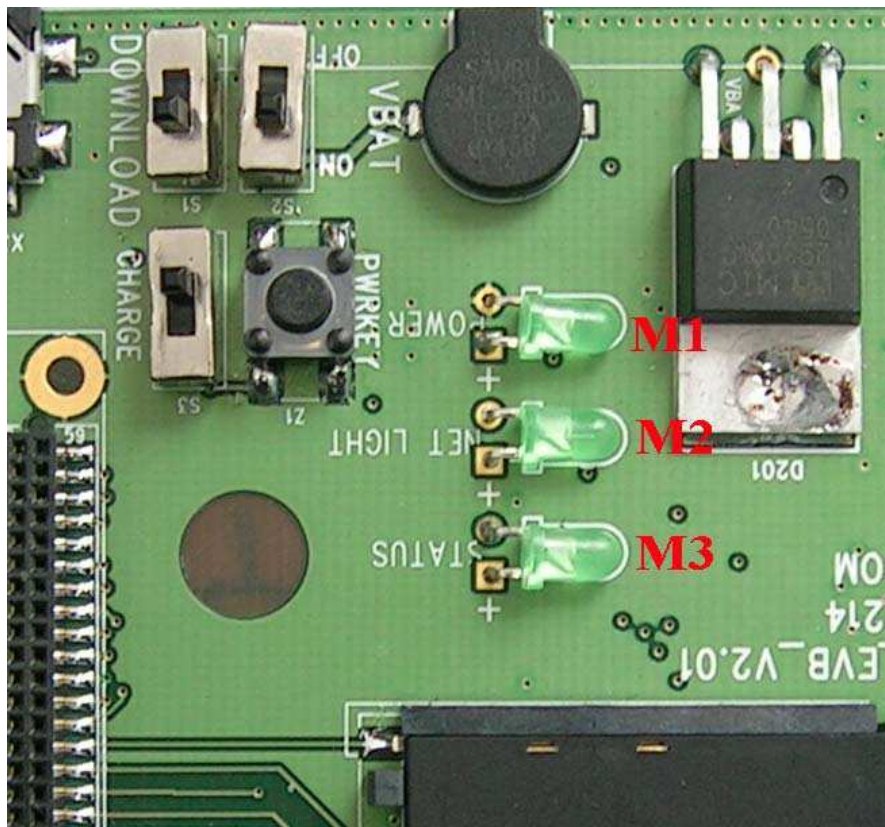


Figure 9: StatusLED

Working state of status LED as list:

Name	Description	STATUS
M1	VBAT ON/OFF indicator	Bright: VBAT ON; Extinct: VBAT OFF
M2	GSM_NET status indicator	No used
M3	GSM part status indicator	Bright: Module runs normally Extinct: System is powered down or module runs unconventionally

4. Test Interface

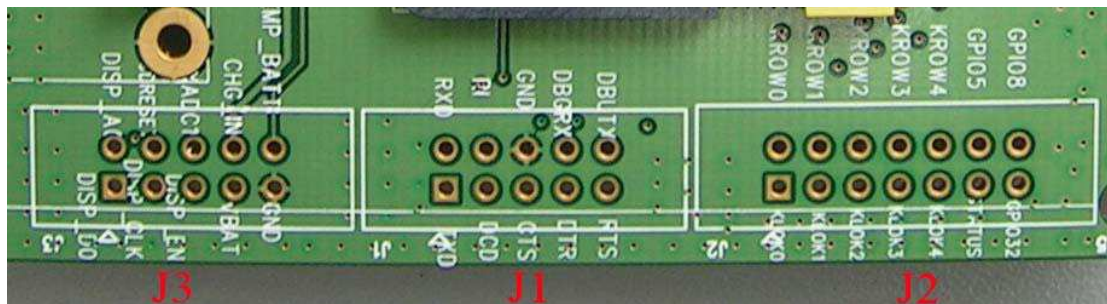


Figure 10: Test interface overview

4.1 Serial Interface

J1---RS232 Interface

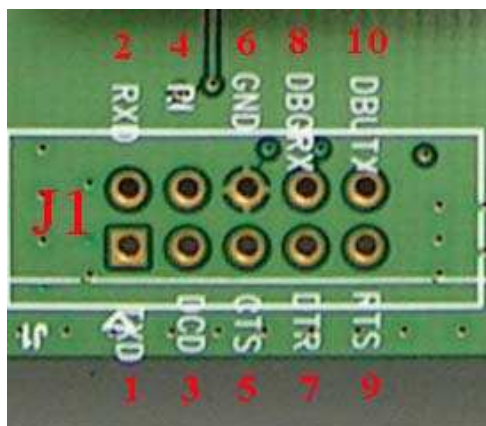


Figure 11: J1 Interface

RS232 Interface Pin List:

Pin	Signal	I/O	Description
1	TXD	O	Transmit data
2	RXD	I	Receive data
3	DCD	O	Data carrier detection
4	RI	O	Ring Indicator
5	CTS	O	Clear to Send
6	GND		GND
7	DTR	I	Data Terminal Ready
8	DEBUG_RX	I	Receive data
9	RTS	I	Request to Send
10	DEBUG_TX	O	Transmit data

4.2 J2---GPIO

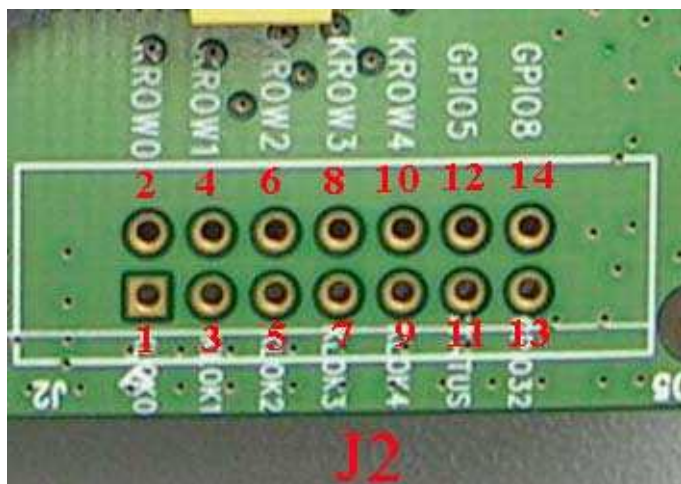


Figure 12: J2 Interface

KEY & CTRL Pin List

Pin	Signal	I/O	Description
1	NC		Keypad array interface
2	KROW0	I	
3	NC		
4	NC		
5	NC		
6	NC		
7	NC		
8	NC		
9	NC		
10	NC		
11	STATUS	O	status of module :on or off
12	NC		
13	NC		
14	GPIO8	O	Control signal of BUZZER

4.3 J3---LCD & I/O

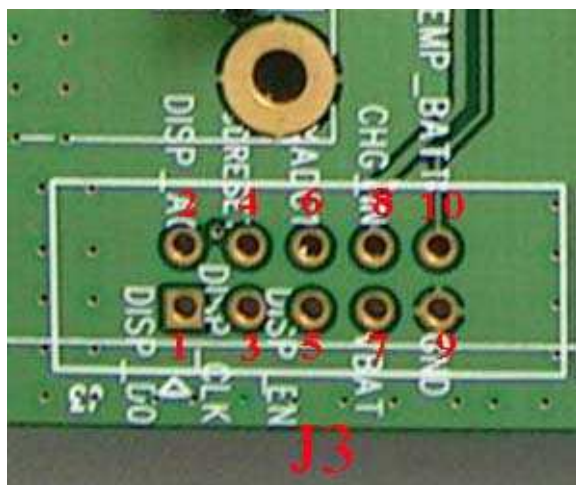


Figure 13: J3 Interface

LCD & I/O Interface Pin List:

Pin	Signal	I/O	Description
1	DISP_D0	I/O	Display data line
2	DISP_A0	O	Display data or address select
3	DISP_CLK	O	Display clock output
4	NCLDRESET	O	Display reset output
5	DISP_EN	O	Display enable output
6	AUXADC1	I	Adc input
7	VBAT	I	VBAT
8	CHG_IN	I	Charger Input
9	GND		Ground
10	TEMP	I	For measure of the batter temperature

5. EVB and accessory equipment

At normal circumstance, the EVB and its accessory are equipped as the Figure 14

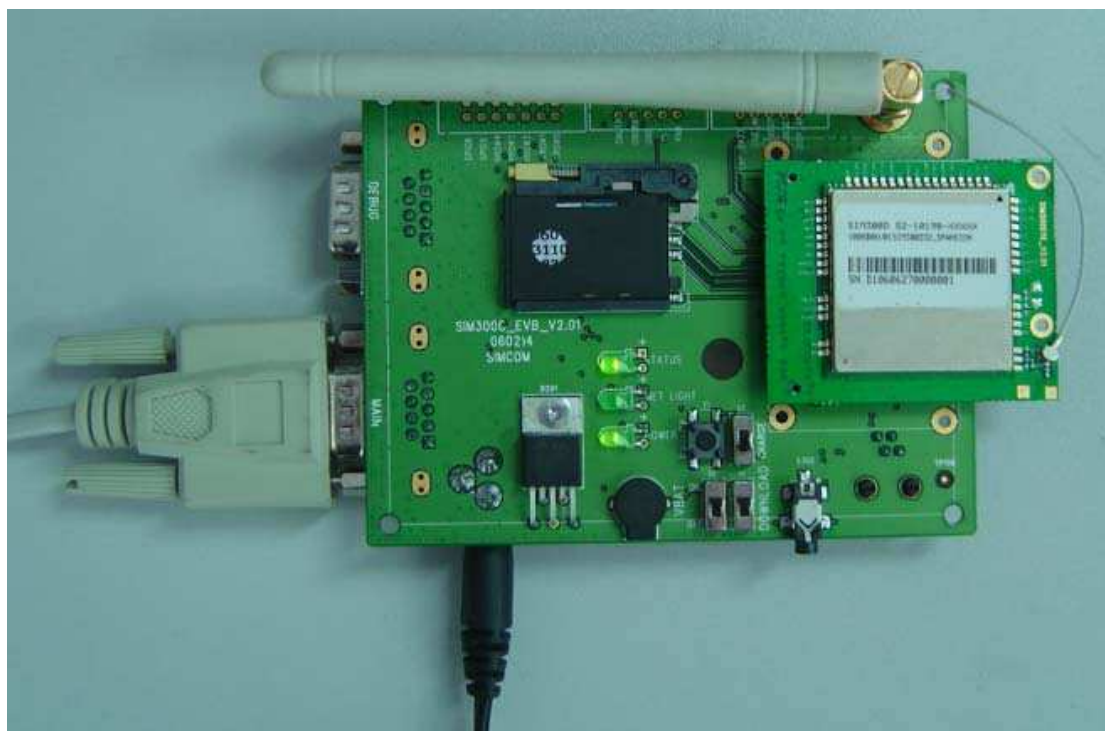


Figure 14: EVB and accessory equipment

6. Illustration:

6.1 Running:

- (1) Connect the SIM300DTE with SIM300D module to the 60pins connector on SIM300D EVB, inserting 5V direct current source adapter, switching the S1 switch on **off** state, S2 switch on **ON** state;
- (2) Press the PWRKEY for about 1 second, and then SIM300D module begins running.

You can see the light M2 on the EVB flashing at a certain frequency. By the state, you can judge whether the EVB and SIM300D can run or not. No function and test can be executed when we have not connected necessary accessories.

6.2 Connecting Net and calling

- (1) connect the serial port line to the MAIN serial port, open the HyperTerminal(AT command windows) on your Personal computer, the location of the HyperTerminal in windows2000 is START → accessory → communication → HyperTerminal. Set correct Baud Rate and COM number. The Baud Rate of SIM300D is 115200, and the COM number based on which USB port your serial port line insert in, you should select such as COM3 or COM4 etc.
- (2) Connect the antenna to the SIM300DTE with SIM300D module using an antenna transmit line, insert SIM card into the SIM card interface, insert headphones or headset into its interface.
- (3) Act on the step of **running** which mentioned above, power on the system, typing the AT command in the HyperTerminal, and then the SIM300D module will execute its corresponding function.

6.3 Downloading

Connect the serial port line to the **MAIN** serial port, connect the direct current source adapter, run the download program and press the **START** key, then switch the S1 switch on **ON** state, S2 switch on **ON** state, then EVB provide the function of downloading.

6.4 Turns off

Turn off SIM300D module: press the PWRKEY for about 1 second, SIM300D module will be turned off.

6.5 Charging

Connect the SIM300DTE with SIM300D module to the 60pin connector interface and the external battery to charging interface, which have been provided on the EVB. Insert the direct current source adapter; switch shifter S2 on the OFF state, shifter S3 on the ON state, then the SIM300D will go to the charging state.

7. 60 PIN assignment of DIP connector of EVB board

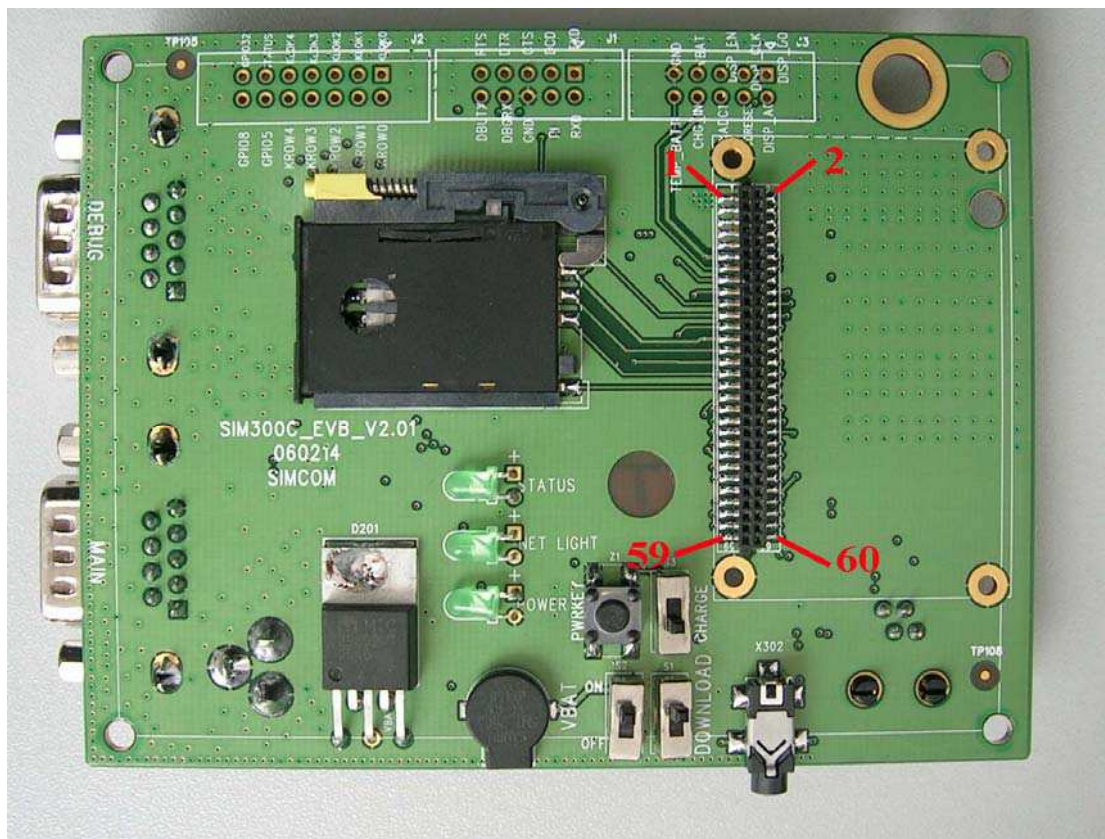


Figure 15: DIP connector of EVB board

Connection diagrams

PIN NO.	PIN NAME	I/O	PIN NO.	PIN NAME	I/O
2	GND		1	VBAT	I
4	GND		3	VBAT	I
6	GND		5	VBAT	I
8	GND		7	VBAT	I
10	GND		9	VBAT	I
12	ADC1	I	11	CHG_IN	I
14	VRTC	I	13	TEMP_BAT	I
16	NC	O	15	NC	O
18	NC		17	PWRKEY	I

SIM300D EVB User Guide

20	NC		19	STATUS	O
22	NC		21	NC	
24	NC		23	GPIO8	I/O
26	NC		25	VSIM	O
28	KROW0	I	27	SIM_RST	O
30	NC		29	SIM_I/O	I/O
32	NC		31	SIM_CLK	O
34	NC		33	SIM_PRESENT	I
36	NC		35	NC	
38	SPI_EN	O	37	DCD	O
40	SPI_CLK	O	39	DTR	I
42	SPI_DO	I/O	41	RXD	I
44	SPI_AO	O	43	TXD	O
46	SPI_RESET	O	45	RTS	I
48	DBG_RX	I	47	CTS	O
50	DBG_TX	O	49	RI	O
52	AGND		51	AGND	
54	MIC1P	I	53	SPK1P	O
56	MIC1N	I	55	SPK1N	O
58	MIC2P	I	57	SPK2P	O
60	MIC2N	I	59	SPK2N	O