



HESTORE.HU

elektronikai alkatrész áruház

EN: This Datasheet is presented by the manufacturer.

Please visit our website for pricing and availability at www.hestore.hu.

This document is the property of Amphenol Corporation and is delivered on the express condition that it is not to be disclosed, reproduced or used, in whole or in part, for the manufacture or sale by anyone other than Amphenol Corporation without its prior consent, and that no right is granted to disclose or to use any information in this document.

Product Specification

Material

Insulator :Glass-Filled Thermoplastic
PBT, UL94V-0 rates

Contact :Brass or Phosphor Bronze
Plated full gold or selected gold in
mating area, 100u" min. tin plated
on termination area, with entire contact
under-plated 50u" min. Nickel

Electrical

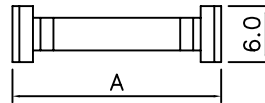
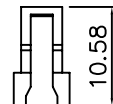
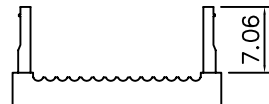
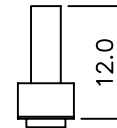
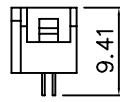
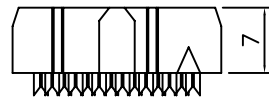
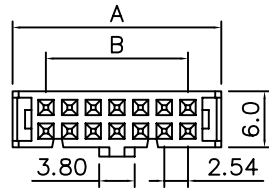
Contact Resistance :20 milliohms
Max at 1 AMP DC.

Insulation Resistance :5000
megohms at 500 VDC

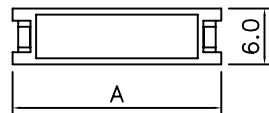
Dielectric Withstanding Voltage :
500 VAC/rms 60Hz for 1 minute

Current Rating :3 AMP

Volatge Rating :250 VAC/rms 60Hz



Strain Relief



T812 X XX XX XX C EU

IDC Socket:
2.54mm Pitch

Housing Color
0: Grey
1: Black

No of Positions:
06: 6 positions
:
:
64: 64 positions

Plating Options:
A1: Flash Gold
A2: 15u"/0,4um Gold
A3: 30u"/0,8um Gold
SN:Tin

EU: RoHS
Compliant
C: Fixed Index

Variation Code:
00: W/O Strain Relief
01: With Strain Relief

Dimensions

| Positions | A | B |
|-----------|-------|-------|
| 6 | 12.16 | 5.08 |
| 8 | 14.74 | 7.62 |
| 10 | 17.27 | 10.16 |
| 12 | 19.85 | 12.70 |
| 14 | 22.40 | 15.24 |

| Positions | A | B |
|-----------|-------|-------|
| 34 | 47.80 | 40.64 |
| 36 | 50.29 | 43.18 |
| 40 | 55.37 | 48.26 |
| 44 | 60.56 | 53.34 |
| 50 | 68.18 | 60.96 |

| Positions | A | B |
|-----------|-------|-------|
| 16 | 24.94 | 17.78 |
| 20 | 30.00 | 22.86 |
| 24 | 35.10 | 27.94 |
| 26 | 37.59 | 30.48 |
| 30 | 42.66 | 35.56 |

| Positions | A | B |
|-----------|-------|-------|
| 56 | 75.74 | 68.58 |
| 60 | 80.80 | 73.66 |
| 62 | 83.35 | 76.20 |
| 64 | 85.90 | 78.74 |



| TOLERANCE (mm) | APPROVALS | DATE | TITLE | AMPHENOL Amphenol European Design Center | |
|----------------------------|--------------------|-------------|------------|--|---------------|
| X. ±0.3 | DRAWN Roger | 29/Nov/2006 | IDC Socket | Scale N.A. | Sheet 1 of 1 |
| X.X ±0.2 | CHECKED Eric. | 30/Nov/2006 | | | |
| X.XX ±0.15 | APPROVED Rob K. | 01/Dec/2006 | | | |
| UNLESS OTHERWISE SPECIFIED | UNIT: | SIZE: | DRAWING N° | T812 Series | |
| | | | | | REV. B |