



HESTORE.HU

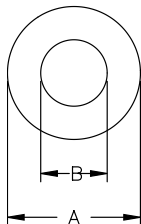
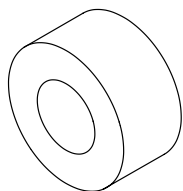
elektronikai alkatrész áruház

EN: This Datasheet is presented by the manufacturer.

Please visit our website for pricing and availability at www.hestore.hu.

ELECTRONIC COMPONENT ACCESSORIES

RT Series Toroidal Cores



Features

- The ring configuration provides for the ultimate in utilization of the ferrite material properties
- Can be used across in a wide frequency range
- The RT type ferrite core is mainly used as a multi-turn suppression core

For performance and mechanical data on these parts please ask for our "Ferrite Typical Data Sheet."

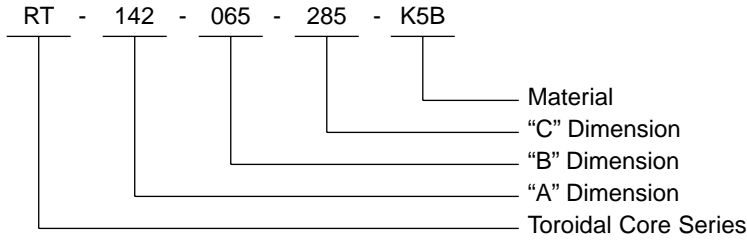
Material: Core Materials: K5B, A5, A6 • Color: Gray							
Part Number	Dimensions			Impedance (Ω at 100 Mhz)			Standard Pack per Bag
	"A"	"B"	"C"	K5B	A5	A6	
RT040-010-035	.157 (4.0 mm)	.039 (1.0 mm)	.138 (3.5 mm)	—	—	—	TBD
RT040-020-015	.157 (4.0 mm)	.079 (2.0 mm)	.059 (1.5 mm)	—	—	25 Ohms	4000
RT040-020-020	.157 (4.0 mm)	.079 (2.0 mm)	.079 (2.0 mm)	—	—	35 Ohms	4000
RT040-020-030	.157 (4.0 mm)	.079 (2.0 mm)	.118 (3.0 mm)	39 Ohms	—	—	4000
RT041-016-040	.161 (4.1 mm)	.063 (1.6 mm)	.157 (4.0 mm)	—	60 Ohms	—	2000
RT044-028-014	.173 (4.4 mm)	.110 (2.8 mm)	.055 (1.4 mm)	—	—	63 Ohms	5000
RT050-020-040	.197 (5.0 mm)	.079 (2.0 mm)	.157 (4.0 mm)	—	—	38 Ohms	2000
RT060-030-020	.236 (6.0 mm)	.118 (3.0 mm)	.079 (2.0 mm)	—	—	34 Ohms	2000
RT060-030-040	.236 (6.0 mm)	.118 (3.0 mm)	.157 (4.0 mm)	46 Ohms	—	—	1000
RT065-043-060	.256 (6.5 mm)	.169 (4.3 mm)	.236 (6.0 mm)	41 Ohms	—	—	1000
RT070-035-040	.276 (7.0 mm)	.138 (3.5 mm)	.157 (4.0 mm)	46 Ohms	—	—	TBD
RT080-040-040	.315 (8.0 mm)	.157 (4.0 mm)	.157 (4.0 mm)	45 Ohms	—	—	1000
RT085-050-030	.335 (8.5 mm)	.197 (5.0 mm)	.118 (3.0 mm)	—	—	33 Ohms	1000
RT090-050-030	.354 (9.0 mm)	.197 (5.0 mm)	.118 (3.0 mm)	37 Ohms	—	55 Ohms	1000
RT090-050-080	.354 (9.0 mm)	.197 (5.0 mm)	.315 (8.0 mm)	62 Ohms	—	—	500
RT095-046-046	.374 (9.5 mm)	.181 (4.6 mm)	.180 (4.57mm)	—	47 Ohms	—	500
RT095-048-048	.374 (9.5 mm)	.189 (4.8 mm)	.189 (4.8 mm)	46 Ohms	—	33 Ohms	500
RT095-050-050	.374 (9.5 mm)	.197 (5.0 mm)	.197 (5.0 mm)	—	43 Ohms	55 Ohms	1000
RT100-060-040	.394 (10.0 mm)	.236 (6.0 mm)	.157 (4.0 mm)	—	46 Ohms	—	1000
RT100-060-050	.394 (10.0 mm)	.236 (6.0 mm)	.197 (5.0 mm)	—	35 Ohms	—	TBD
RT100-062-062	.394 (10.0 mm)	.242 (6.15mm)	.244 (6.2 mm)	28 Ohms	—	—	500
RT100-070-050	.394 (10.0 mm)	.276 (7.0 mm)	.197 (5.0 mm)	44 Ohms	—	—	500
RT100-070-075	.394 (10.0 mm)	.276 (7.0 mm)	.295 (7.5 mm)	39 Ohms	—	—	500
RT110-050-090	.433 (11.0 mm)	.197 (5.0 mm)	.354 (9.0 mm)	99 Ohms	—	—	200
RT120-060-040	.472 (12.0 mm)	.236 (6.0 mm)	.157 (4.0 mm)	45 Ohms	—	34 Ohms	500
RT120-060-060	.472 (12.0 mm)	.236 (6.0 mm)	.236 (6.0 mm)	49 Ohms	—	—	500
RT120-060-080	.472 (12.0 mm)	.236 (6.0 mm)	.315 (8.0 mm)	—	85 Ohms	—	500
RT120-070-055	.472 (12.0 mm)	.276 (7.0 mm)	.217 (5.5 mm)	—	44 Ohms	—	500
RT120-070-060	.472 (12.0 mm)	.276 (7.0 mm)	.236 (6.0 mm)	—	—	46 Ohms	500
RT120-070-080	.472 (12.0 mm)	.276 (7.0 mm)	.315 (8.0 mm)	55 Ohms	—	—	500
RT125-080-064	.492 (12.5 mm)	.315 (8.0 mm)	.250 (6.35mm)	—	46 Ohms	—	500
RT125-080-120	.492 (12.5 mm)	.315 (8.0 mm)	.472 (12.0 mm)	—	—	—	200
RT130-070-055	.512 (13.0 mm)	.276 (7.0 mm)	.217 (5.5 mm)	—	52 Ohms	—	300
RT130-070-070	.512 (13.0 mm)	.276 (7.0 mm)	.276 (7.0 mm)	44 Ohms	—	—	200
RT140-080-050	.551 (14.0 mm)	.315 (8.0 mm)	.197 (5.0 mm)	—	48 Ohms	—	500
RT140-080-070	.551 (14.0 mm)	.315 (8.0 mm)	.276 (7.0 mm)	55 Ohms	—	—	500
RT142-064-102	.559 (14.2 mm)	.250 (6.35mm)	.400 (10.16mm)	—	—	—	TBD
RT142-070-150	.559 (14.2 mm)	.276 (7.0 mm)	.591 (15.0 mm)	—	—	80 Ohms	200
RT142-080-120	.559 (14.2 mm)	.315 (8.0 mm)	.472 (12.0 mm)	—	—	—	200
RT145-103-080	.571 (14.5 mm)	.406 (10.3 mm)	.315 (8.0 mm)	64 Ohms	—	—	200
RT150-105-120	.591 (15.0 mm)	.413 (10.5 mm)	.472 (12.0 mm)	60 Ohms	—	—	200
RT158-079-142	.625 (15.88mm)	.310 (7.87mm)	.562 (14.27mm)	—	131 Ohms	—	100
RT160-080-160	.630 (16.0 mm)	.315 (8.0 mm)	.630 (16.0 mm)	119 Ohms	—	—	TBD
RT160-090-120	.630 (16.0 mm)	.472 (12.0 mm)	.315 (8.0 mm)	45 Ohms	—	—	100

Impedance figures are typical values.

ELECTRONIC COMPONENT ACCESSORIES

RT Series (cont.) Toroidal Cores

PART NUMBER CODE EXAMPLE



All dimensions shown are for the standard products available. However, other variations can be made to individual customer specification where required.

Material: Core Materials: K5B, A5, A6 • Color: Gray

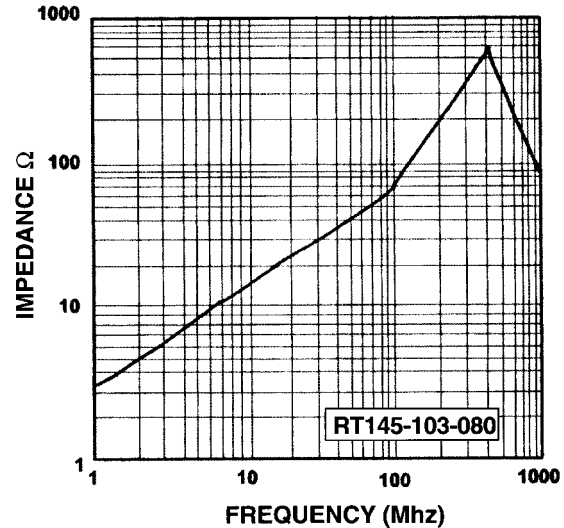
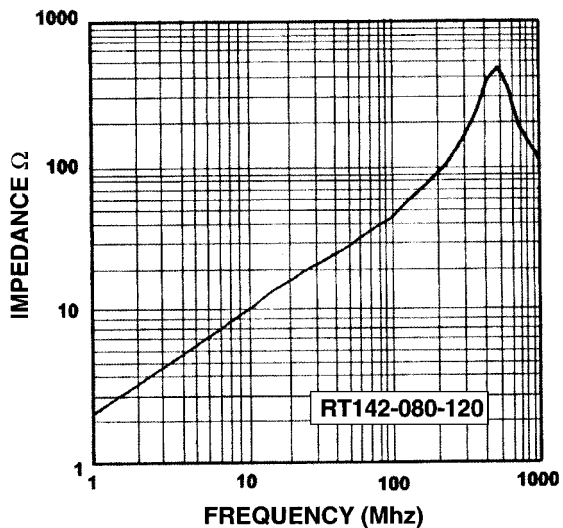
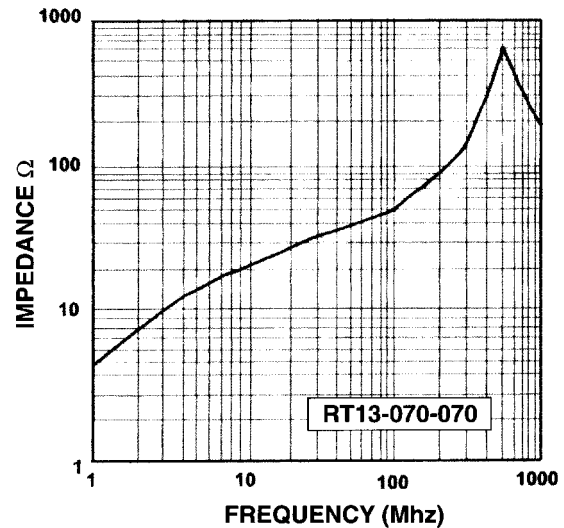
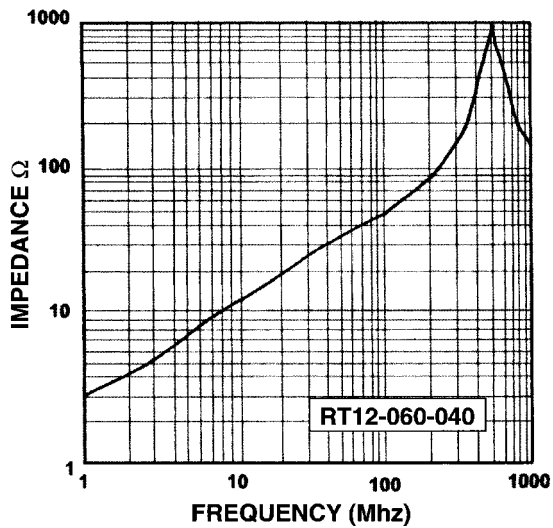
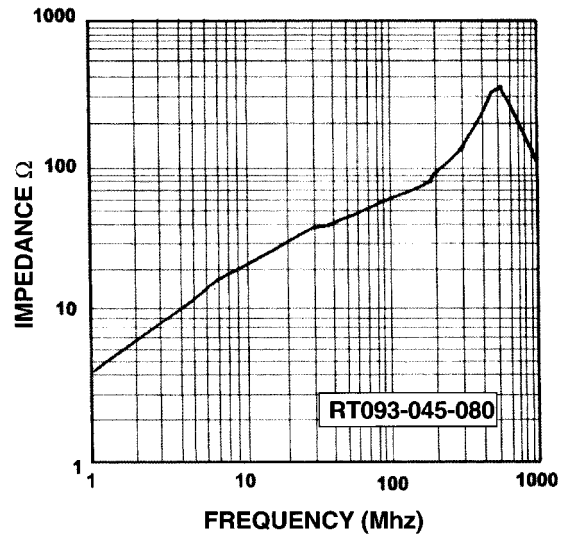
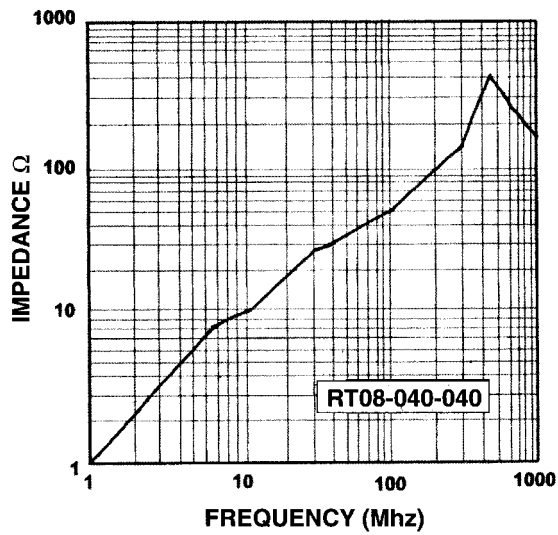
Part Number	Dimensions			Impedance (Ω at 100 Mhz)			Standard Pack per Bag
	"A"	"B"	"C"	K5B	A5	A6	
RT160-120-080	.630 (16.0 mm)	.354 (9.0 mm)	.472 (12.0 mm)	84 Ohms	—	—	200
RT160-120-150	.630 (16.0 mm)	.472 (12.0 mm)	.591 (15.0 mm)	60 Ohms	—	—	100
RT165-082-130	.650 (16.5 mm)	.323 (8.2 mm)	.512 (13.0 mm)	105 Ohms	—	—	120
RT165-082-160	.650 (16.5 mm)	.323 (8.2 mm)	.630 (16.0 mm)	110 Ohms	—	—	120
RT165-092-075	.650 (16.5 mm)	.362 (9.2 mm)	.295 (7.5 mm)	70 Ohms	—	—	200
RT175-080-100	.689 (17.5 mm)	.315 (8.0 mm)	.394 (10.0 mm)	—	—	—	TBD
RT175-095-064	.689 (17.5 mm)	.374 (9.5 mm)	.250 (6.35mm)	—	51 Ohms	—	200
RT175-095-127	.689 (17.5 mm)	.374 (9.5 mm)	.500 (12.7 mm)	95 Ohms	—	—	100
RT175-095-150	.689 (17.5 mm)	.374 (9.5 mm)	.591 (15.0 mm)	111 Ohms	—	—	100
RT175-107-080	.689 (17.5 mm)	.421 (10.7 mm)	.315 (8.0 mm)	58 Ohms	—	—	200
RT180-100-060	.709 (18.0 mm)	.394 (10.0 mm)	.236 (6.0 mm)	48 Ohms	—	45 Ohms	200
RT180-100-100	.709 (18.0 mm)	.394 (10.0 mm)	.394 (10.0 mm)	70 Ohms	—	—	100
RT187-102-102	.735 (18.67mm)	.400 (10.16mm)	.400 (10.16mm)	—	—	—	100
RT187-102-143	.735 (18.67mm)	.400 (10.16mm)	.562 (14.27mm)	109 Ohms	—	—	150
RT187-102-170	.735 (18.67mm)	.400 (10.16mm)	.670 (17.02mm)	—	123 Ohms	—	TBD
RT187-102-185	.735 (18.67mm)	.400 (10.16mm)	.729 (18.52mm)	—	—	—	TBD
RT190-120-080	.748 (19.0 mm)	.472 (12.0 mm)	.315 (8.0 mm)	140 Ohms	—	—	200
RT190-120-100	.748 (19.0 mm)	.472 (12.0 mm)	.394 (10.0 mm)	—	—	—	TBD
RT205-102-050	.807 (20.5 mm)	.402 (10.2 mm)	.197 (5.0 mm)	63 Ohms	—	—	140
RT205-102-100	.807 (20.5 mm)	.402 (10.2 mm)	.394 (10.0 mm)	100 Ohms	—	—	800
RT212-127-060	.835 (21.2 mm)	.500 (12.7 mm)	.236 (6.0 mm)	51 Ohms	—	—	200
RT220-135-064	.866 (22.0 mm)	.531 (13.5 mm)	.250 (6.35mm)	50 Ohms	—	—	200
RT220-135-080	.866 (22.0 mm)	.531 (13.5 mm)	.315 (8.0 mm)	—	70 Ohms	—	100
RT220-140-100	.866 (22.0 mm)	.551 (14.0 mm)	.394 (10.0 mm)	92 Ohms	—	—	100
RT221-137-064	.866 (22.0 mm)	.540 (13.72mm)	.250 (6.35mm)	—	—	—	TBD
RT221-137-127	.870 (22.1 mm)	.540 (13.72mm)	.500 (12.7 mm)	—	80 Ohms	—	100
RT225-138-127	.886 (22.5 mm)	.543 (13.8 mm)	.500 (12.7 mm)	71 Ohms	—	—	TBD
RT230-135-064	.906 (23.0 mm)	.531 (13.5 mm)	.250 (6.35mm)	—	48 Ohms	—	200
RT236-150-114	.929 (23.6 mm)	.591 (15.0 mm)	.449 (11.4 mm)	82 Ohms	—	—	100
RT250-150-080	.984 (25.0 mm)	.591 (15.0 mm)	.315 (8.0 mm)	77 Ohms	—	—	TBD
RT250-150-100	.984 (25.0 mm)	.591 (15.0 mm)	.394 (10.0 mm)	—	—	—	600
RT250-150-120	.984 (25.0 mm)	.591 (15.0 mm)	.472 (12.0 mm)	—	89 Ohms	82 Ohms	600
RT254-127-064	1.000 (25.4 mm)	.500 (12.7 mm)	.250 (6.35mm)	—	78 Ohms	—	100
RT260-130-127	1.024 (26.0 mm)	.512 (13.0 mm)	.500 (12.7 mm)	—	120 Ohms	—	600
RT280-160-075	1.102 (28.0 mm)	.630 (16.0 mm)	.295 (7.5 mm)	60 Ohms	—	—	100
RT280-160-130	1.102 (28.0 mm)	.630 (16.0 mm)	.512 (13.0 mm)	108 Ohms	—	—	320
RT280-160-170	1.102 (28.0 mm)	.630 (16.0 mm)	.669 (17.0 mm)	—	113 Ohms	—	600
RT310-190-070	1.220 (31.0 mm)	.748 (19.0 mm)	.276 (7.0 mm)	—	50 Ohms	—	100
RT310-190-080	1.220 (31.0 mm)	.748 (19.0 mm)	.315 (8.0 mm)	—	52 Ohms	—	440
RT310-190-150	1.220 (31.0 mm)	.748 (19.0 mm)	.591 (15.0 mm)	—	—	—	TBD
RT310-190-160	1.220 (31.0 mm)	.748 (19.0 mm)	.630 (16.0 mm)	—	104 Ohms	—	320
RT310-190-222	1.220 (31.0 mm)	.748 (19.0 mm)	.875 (22.22mm)	—	141 Ohms	—	192
RT406-274-150	1.598 (40.6 mm)	1.079 (27.4 mm)	.591 (15.0 mm)	90 Ohms	—	—	144
RT614-360-128	2.417 (61.4 mm)	1.417 (36.0 mm)	.504 (12.8 mm)	—	117 Ohms	—	80

Impedance figures are typical values.

ELECTRONIC COMPONENT ACCESSORIES

RT Series (cont.)

Toroidal Cores



RT Series (cont.)

Toroidal Cores

