



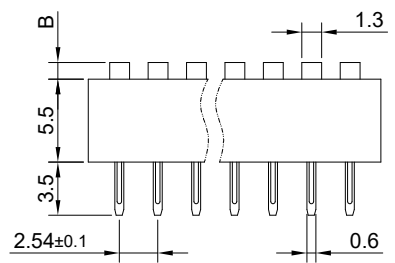
HESTORE.HU

elektronikai alkatrész áruház

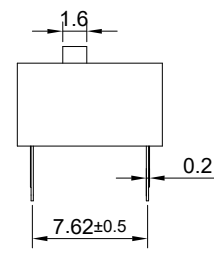
EN: This Datasheet is presented by the manufacturer.

Please visit our website for pricing and availability at www.hestore.hu.

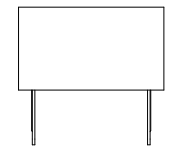
FOR 客户名称	APPROVED 客户确认签字	ATTN 销售负责人



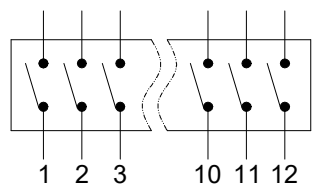
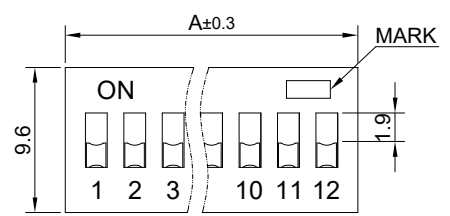
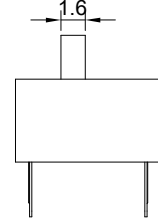
EXTEND ACTUATOR(E)



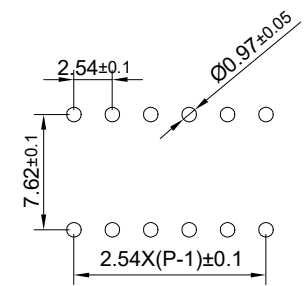
RECESSED ACTUATOR(R)



EXTEND ACTUATOR(L)



WIRING DIAGRAM



PCB LAYOUT

ACTUATOR DIM B:

TYPE	VALUE
EXTEND	1.1
RECESSED	0
HEIGHTEN	2.9

NUMBER	DS★01	DS★02	DS★03	DS★04	DS★05	DS★06	DS★07	DS★08	DS★09	DS★10	DS★12
DIM A (mm)	3.54	6.64	9.18	11.72	14.26	16.8	19.34	21.88	24.42	26.96	32.04

PART NUMBER: DS★-◇◆-△

"★"	ACTUATOR
E	EXTEND ACTUATOR
R	RECESSED
L	HEIGHTEN

"◇"	POSITION
01~12	1To12
11 EXCLUDED	

"◆"	HOUSING COLOR
R	RED
B	BLUE
N	BLACK

"△"	PLATING
GT	SEMI TIN GOLD
GA	GOLD

MATERIALS:
 1.COVER: PBT.
 2.HOUSING: PBT.
 3.ACTUATOR: PBT.
 4.TERMINALS SEAL: EPOXY RESIN.
 5.TERMINALS: BRASS, GOLD OVER NICKEL PLATED.

SPECIFICATIONS:
 1.CONTACT RATING: SWITCHING: 25mA AT 24VDC, NON SWITCHING: 100mA AT 50VDC.
 2.INSULATION RESISTANCE: 100MΩ AT 500VDC.
 3.CONTACT RESISTANCE: INITIAL: 50mΩ Max. AFER LIFE TEST: 100 mΩ Max.
 4.DIELECTRIC STRENGTH: 500VAC 50Hz /1Min.
 5.OPERATING FORCE:1000gf Max.
 6.INTERELECTRODE CAPACITANCE: <5pf, 1MHz±10kHz.
 7.ELECTRICAL LIFE:2000 cycles.
 8.OPERATING TEMPERATURE: -40°C TO +85°C (NO ICE).
 9.SOLDERING:
 HAND SOLDERING: SOLDERING IRON 30W AT UNDER 320°C/2SEC, Max.
 WAVE SOLDERING: TEMPERATURE: 260°C/5SEC, Max,
 KEEP ALL ACTUATORS IN "OFF" POSRTION DURING.
 10.ALL DIP SWITCHES ARE SHIPPED IN TUBE WITH "OFF" POSITION.
 11.GENERAL TOLERANCE:0-18mm=±0.25, 18-80mm=±0.52.

BRAND 品牌		红波按钮制造有限公司			
ONPOW 欧宝龙®		ONPOW PUSH BUTTON MANUFACTURE CO.,LTD.			
TITLE 名称	DIP SWITCH PITCH2.54	UNIT 单位	mm		
DWG NO. 图号	DS SERIES	SCALE 比例	2 : 1	SIZE 图纸	A4
FILE NAME 档案名称	DS.DWG	DRAWN 制图	HCP 2026/02/09	SHEET 张	1/1
		REV. 版本	V1.0		