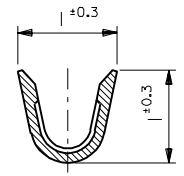
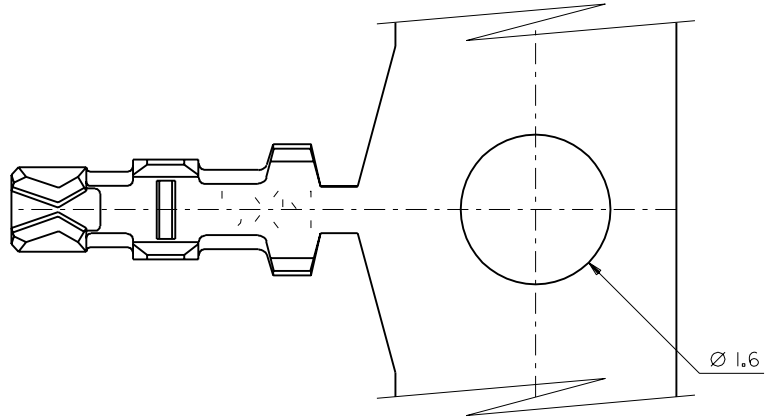




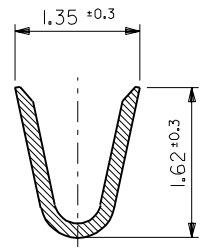
HESTORE.HU
elektronikai alkatrész áruház

EN: This Datasheet is presented by the manufacturer.

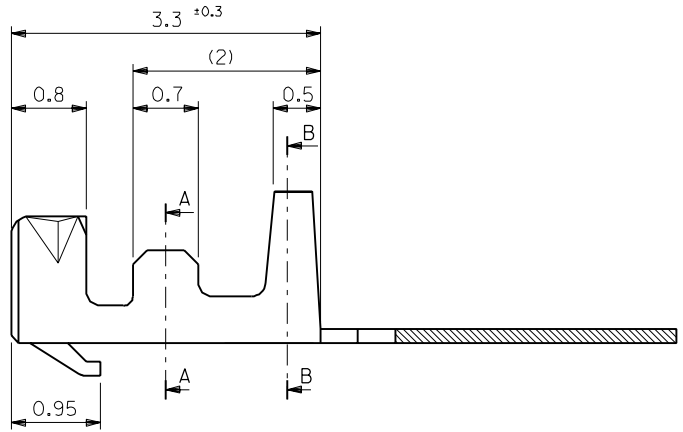
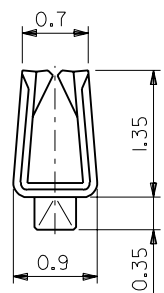
Please visit our website for pricing and availability at www.hestore.hu.



SECT. A-A



SECT. B-B



50058-8100	バラ状 LOOSE
50058-8000	連鎖状 CHAIN
ENG. NO.	端子形状 FORM

注記
NOTES

- 適合ハウジング：51021シリーズ
APPLICABLE HOUSING：51021 SERIES
- メッキ仕様 PLATING
錫 0.9μm MIN. リフロー処理（前メッキ）
TIN 0.9μm MIN. REFLOW TREATMENT (PRE-PLATED)

材料 MATERIAL リン青銅 PHOSPHOR BRONZE (t=0.15)		仕上げ FINISH —H—	
適用電線範囲 WIRE RANGE AWG #28-32		被覆外径 INS. RANGE Ø 0.5-1.0	
DRAWN BY '92/10/21 H.HIRAMOTO		CHK'D BY '93/9/6 M.FUKUSHIMA	
APP'D BY '93/9/6 M.FUKUSHIMA		尺度 SCALE 20 - 1	
DR. / CHK.	日付 DATE	変更内容 REVISION RECORD	記号 LTR
DR. / CHK.	日付 DATE	変更内容 REVISION RECORD	記号 LTR

角度 ANGLE	±3°
30以上 OVER	+0.3
10以上 30未満 OVER UNDER	+0.25
10未満 UNDER	+0.2
一般公差 GENERAL TOLERANCES	

molex MOLEX-JAPAN CO.,LTD. 日本モレックス株式会社	
REVISE ONLY ON CAD SYSTEM	
TITLE 名称 1.25 WIRE TO BOARD CONN. CRIMP REC. TERMINAL	
DWG. NO. SD-50058-8*00	REV D