



HESTORE.HU

elektronikai alkatrész áruház

EN: This Datasheet is presented by the manufacturer.

Please visit our website for pricing and availability at www.hestore.hu.

QPM11 Pressure switch

Feature :

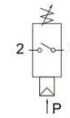
We strive to be perfect in every detail.
 Made of high quality aluminum materials, firm with long service life.
 Type: Adjustable Pressure Switch.
 Normally open and closed integrated.
 Working voltage: AC110V, AC220V, DC12V, DC24V Current: 0.5A,

Pressure range: 15-145psi
 (0.1-1 .0MPa) , Max pulse number: 200n/min.
 Used to control the pressure of the pump, keeping it in normal operation.

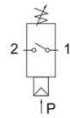
Note :
 NPT thread can be customized.



Symbol



Normal Open Type



Normal Closed Type

Model	QPM11-NO	QPM11-NC	QPF-1
Working Media	Compressed Air		
Working Pressure Range	0.1~0.7Mpa		
Temperature	-5~60°C		
Action Mode	Adjustable Pressure Type		
Installation And Connection Mode	Male Thread		
Port Size	PT1/4(Need Customized)		
Working Pressure	AC110V, AC220V, DC12V, DC24V		
Max. Working Current	500mA		
Max. Power	100VA, 24VA		
Isolation Voltage	1500V, 500V		
Max. Pulse	200 Cycles/Min		
Service Life	10 ⁶ Cycles		
Protective Class(With Protective Sleeve)	IP54		

Note: the water pressure should not exceed 3kg when in use

Dimension

