



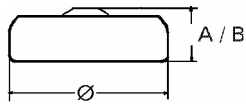
HESTORE.HU
elektronikai alkatrész áruház

EN: This Datasheet is presented by the manufacturer.

Please visit our website for pricing and availability at www.hestore.hu.

Data Sheet

Type Number 20303
Designation IEC SR 44
System Silver oxide / Zinc /
 NaOH - Electrolyte



Nominal Voltage 1,55 V
Typical Capacity C 160 mAh
 Load 5,6 kOhm, at 20°C down to 1.2 V

Weight (approx.) 2,33 g
Volume 0,57 ccm
Coding..... Date of Manufacturing
 Month/Year

Temperature Ranges

	min	max.
Storage	-10°C	65°C
Discharge	-10°C	65°C

Dimensions

	min	max.
Diameter (Ø).....	11,25	11,60
Height (A/B)	5,0	5,4

Segment Watch

Main Applications Watch
 Photo
 Electronic

Typical Capacities (at 20°C)

Discharge Type	Load	End Voltage:	1.2 V
Continuous 24h/d,7d/w Current [µA]:	5600 Ω	Time:	585 h
		Capacity [mAh]:	160
	275	Energy [mWh]:	245