



HESTORE.HU

elektronikai alkatrész áruház

EN: This Datasheet is presented by the manufacturer.

Please visit our website for pricing and availability at www.hestore.hu.



Raspberry Pi 4 Model B

PCN 45 – Dual RAM variant

Colophon

© 2022-2026 Raspberry Pi Ltd

This documentation is licensed under a [Creative Commons Attribution-NoDerivatives 4.0 International](https://creativecommons.org/licenses/by-nd/4.0/) (CC BY-ND).

Release	1
Build date	30/01/2026
Build version	27d923624cde

Legal disclaimer notice

TECHNICAL AND RELIABILITY DATA FOR RASPBERRY PI PRODUCTS (INCLUDING DATASHEETS) AS MODIFIED FROM TIME TO TIME (“RESOURCES”) ARE PROVIDED BY RASPBERRY PI LTD (“RPL”) “AS IS” AND ANY EXPRESS OR IMPLIED WARRANTIES, INCLUDING, BUT NOT LIMITED TO, THE IMPLIED WARRANTIES OF MERCHANTABILITY AND FITNESS FOR A PARTICULAR PURPOSE ARE DISCLAIMED. TO THE MAXIMUM EXTENT PERMITTED BY APPLICABLE LAW IN NO EVENT SHALL RPL BE LIABLE FOR ANY DIRECT, INDIRECT, INCIDENTAL, SPECIAL, EXEMPLARY, OR CONSEQUENTIAL DAMAGES (INCLUDING, BUT NOT LIMITED TO, PROCUREMENT OF SUBSTITUTE GOODS OR SERVICES; LOSS OF USE, DATA, OR PROFITS; OR BUSINESS INTERRUPTION) HOWEVER CAUSED AND ON ANY THEORY OF LIABILITY, WHETHER IN CONTRACT, STRICT LIABILITY, OR TORT (INCLUDING NEGLIGENCE OR OTHERWISE) ARISING IN ANY WAY OUT OF THE USE OF THE RESOURCES, EVEN IF ADVISED OF THE POSSIBILITY OF SUCH DAMAGE.

RPL reserves the right to make any enhancements, improvements, corrections or any other modifications to the RESOURCES or any products described in them at any time and without further notice.

The RESOURCES are intended for skilled users with suitable levels of design knowledge. Users are solely responsible for their selection and use of the RESOURCES and any application of the products described in them. User agrees to indemnify and hold RPL harmless against all liabilities, costs, damages or other losses arising out of their use of the RESOURCES.

RPL grants users permission to use the RESOURCES solely in conjunction with the Raspberry Pi products. All other use of the RESOURCES is prohibited. No licence is granted to any other RPL or other third party intellectual property right.

HIGH RISK ACTIVITIES. Raspberry Pi products are not designed, manufactured or intended for use in hazardous environments requiring fail safe performance, such as in the operation of nuclear facilities, aircraft navigation or communication systems, air traffic control, weapons systems or safety-critical applications (including life support systems and other medical devices), in which the failure of the products could lead directly to death, personal injury or severe physical or environmental damage (“High Risk Activities”). RPL specifically disclaims any express or implied warranty of fitness for High Risk Activities and accepts no liability for use or inclusions of Raspberry Pi products in High Risk Activities.

Raspberry Pi products are provided subject to RPL’s [Standard Terms](#). RPL’s provision of the RESOURCES does not expand or otherwise modify RPL’s [Standard Terms](#) including but not limited to the disclaimers and warranties expressed in them.

Document version history

Release	Date	Description
1	30 Jan 2026	Initial release

Product Change Notification

Notification ID

45

Notification date

30 Jan 2026

Title

Update of Raspberry Pi 4 Model B (all variants) PCB to support dual DRAM modules.

Products Affected

Raspberry Pi 4 Model B

Reason for Change

Dual DRAM device variant to allow DRAM supply chain flexibility. Manufacturing process improvement (this new revision uses intrusive reflow soldering).

Change Description

The PCB has been revised to include a second site for DRAM placement on the rear of the board, and to allow for intrusive reflow soldering during manufacture.

Old PCB revision: 9

New PCB revision: 13a

New software model number: 1.5

Raspberry Pi Ltd have extensively tested and qualified alternatives which closely match the original parts in terms of specification and performance.

Mechanical (Form, Fit, Function) Changes

There is now a 2nd LPDDR4 device on the underside of the PCB and some small passive components have moved to accommodate this addition.

Electrical

None

Software/Firmware Changes Required

This new product revision is supported in bootloader versions from 9 Jan 2026 onwards. (pieeprom-2026-01-09.bin)

The bootloader version and date can be queried by running 'vcgencmd version' from the Raspberry Pi OS command line.

Raspberry Pi Ltd always recommend using the latest version of bootloader and Linux kernel, wherever that is practical.

Use Raspberry Pi Imager to create a new SD card with the latest Raspberry Pi OS, or use the following to upgrade an existing system:

```
<> Code
sudo apt update
sudo apt full-upgrade
```

Transition Date(s)

Feb 2026

Any RAM size SKU may be built as this dual chip variant and there will be a mix of dual and single chip boards in production. For a list of possible RAM chips in use, please see PCN 46, Raspberry Pi 4 Model B, Alternative sources of RAM.

Identification Method to Distinguish Change

On a running board with the latest Raspberry Pi OS `cat /proc/cpuinfo` will report "Model" as "Raspberry Pi 4 Model B Rev 1.5"

The new product can also be distinguished by examination. The new revision PCB has an additional RAM chip on the rear of the board and has the date 2025 silkscreened on the front of the board.

This revision of the PCB is designed for intrusive reflow manufacture so there may also be visible differences in the soldering.

Figure 1.

Front of board

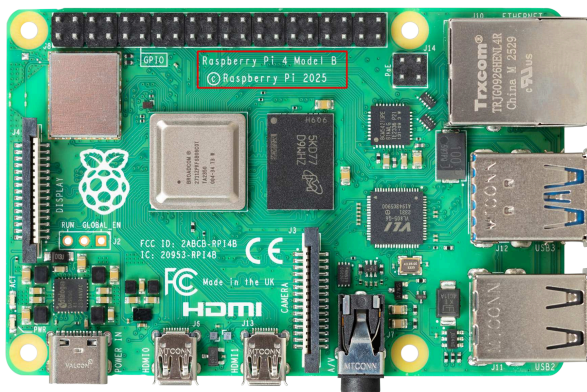
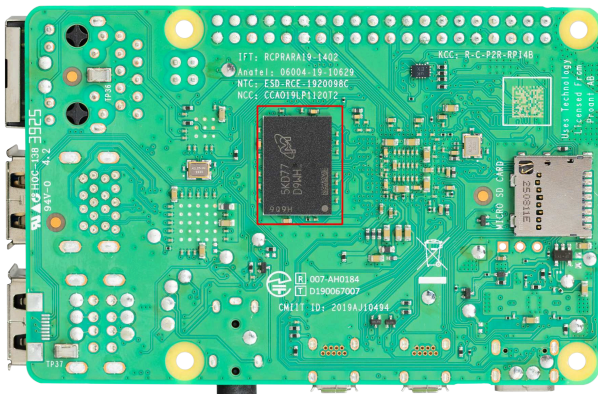


Figure 2.

Rear of board



Contact Details for more information

Please contact applications@raspberrypi.com if you have any queries about this PCN.

Web: www.raspberrypi.com



Raspberry Pi

Raspberry Pi is a trademark of Raspberry Pi Ltd