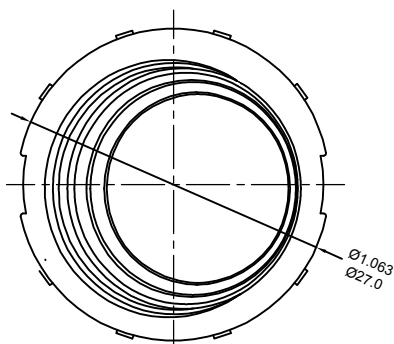




EN: This Datasheet is presented by the manufacturer.

Please visit our website for pricing and availability at www.hestore.hu.



SWITCH CIRCUIT APPLICATION



SPST
Pole on/off illuminated

ROCKER SWITCH MODEL MR2 SERIES

RATING:16(8)A 125/250V~ (cURus/ENEC15)

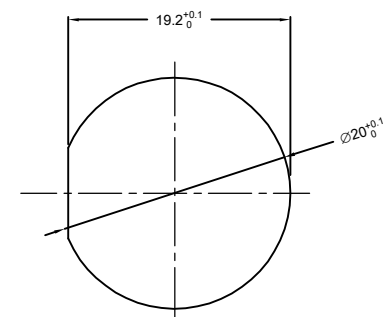
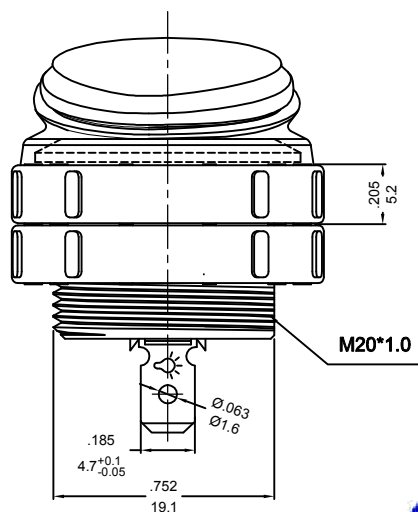
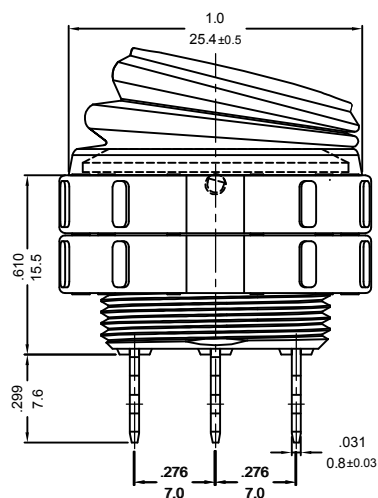
DIELECTRIC VOLTAGE-WITHSTAND:1,500VAC FOR 1 MINUTE

INSULATION RESISTANCE:DC 500V 100MΩ (MIN.)

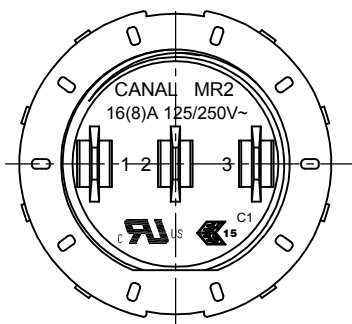
CONTACT RESISTANCE:20mΩ INITIAL (MAX.)

ILLUMINATED:200~250VAC

WATERPROOF GRADE: IP68 (ABOVE THE PANEL)



PANEL THICKNESS:1.0~3.0mm



NOTE:TOLERANCES UNLESS OTHERWISE SPECIFIED:± .012/0.3 (in/mm)

REVISION	DESCRIPTION	REVISED BY	TOLERANCES		ANGLE $\frac{1}{2}^\circ$		UNIT	mm	PART NAME	DWG NO
			DRAWN BY	楊偉韶	DESIGNED BY	蔡劍	SCALE	2/1	MR2 SPEC DRAWING	S9104C
A2025.06.18	增加螺帽	楊偉韶	CHECKED BY		APPROVED BY		DATE	2023.02.02	MR2-110R2N-GB*Q-2ERC	
A2023.06.13	依实物修正图面	楊偉韶								
A2023.02.02	首次出图	楊偉韶								