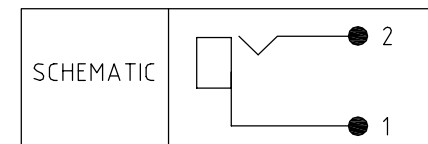
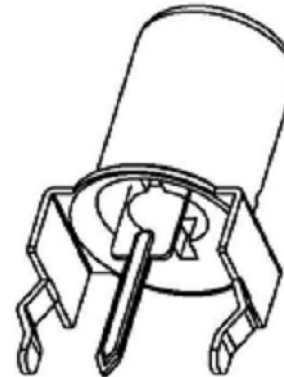
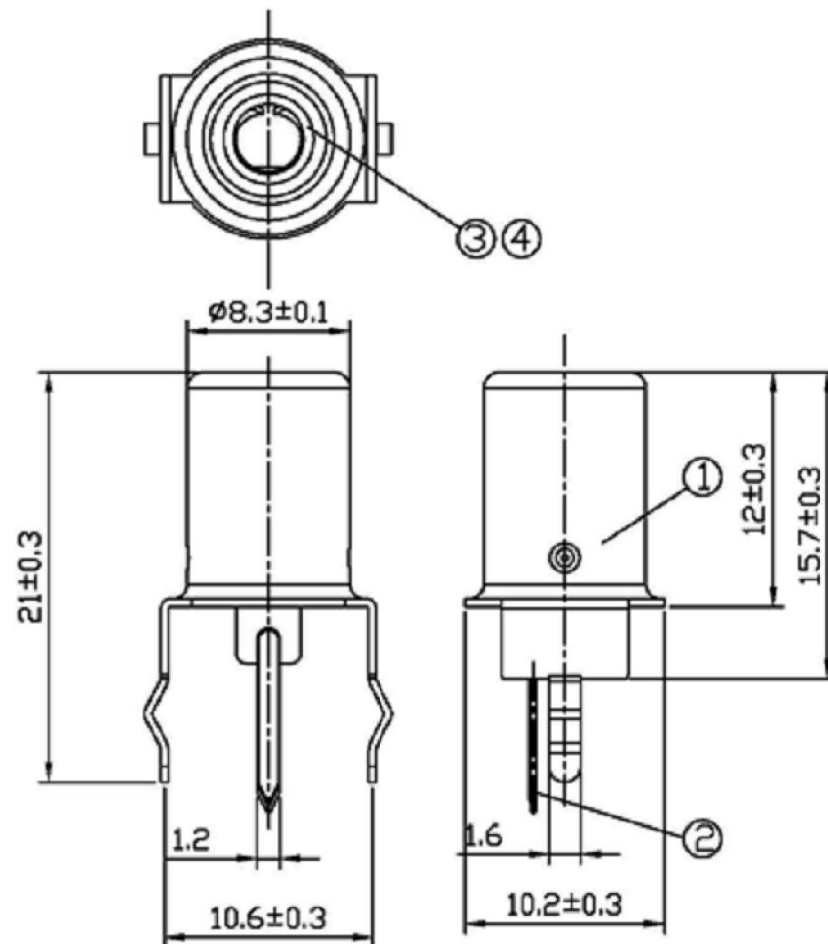




**EN:** This Datasheet is presented by the manufacturer.

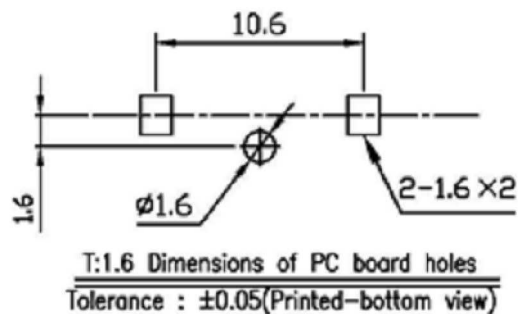
Please visit our website for pricing and availability at [www.hestore.hu](http://www.hestore.hu).

ISS.	AMEND	DATE
1	REDRAWN	06/07/90
2	TO MATCH PRODN	04/12/96
3	GOLD ADDED	26/10/00
4	UPDATE YEL+WHITE DEL	06/10/15



PART No.	WASHER	FINISH
FC68400	BLACK	TIN
FC68400G	BLACK	GOLD
FC68401	RED	TIN
FC68401G	RED	GOLD

UNLESS OTHERWISE SPECIFIED, TOLERANCE  $\pm 0.25$



ITEM	DESCRIPTION	MATERIAL	FINISH
1	OUTER CONTACT	BRASS 0.4mm	SEE TABLE
2	TERMINAL	BRASS 0.3mm	SEE TABLE
3	WASHER	PBT 4815	UL94 V0 (SEE TABLE)
4	INSULATOR	PBT 4815	UL94 V0 (BLACK)

<b>RoHS</b> COMPLIANT
TOLERANCE NO DEC. PLACE $\pm$ 1 DEC. PLACE $\pm$ 2 DEC. PLACE $\pm$ HOLE $\varnothing$ $\pm$ ANGLES $\pm$ UNLESS OTHERWISE STATED

**Cliff Electronic Components Ltd.**

76 Holmethorpe Avenue, Holmethorpe Industrial Estate,  
Redhill, Surrey, RH1 2PF, England, UK  
Tel: 01737-771375 Fax: 01737-766012 Website: www.cliffuk.co.uk

DIMENSIONS IN MILLIMETERS UNLESS OTHERWISE STATED. WORK TO DIMENSIONS. REMOVE ALL BURRS. IF IN DOUBT ASK.

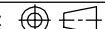
MATERIAL: SEE TABLE

FINISH: SEE TABLE

DRAWN: C.A.M.J.

APPROVED: R.W.T.

3rd ANGLE PROJECTION:



TITLE: SINGLE VERT PC PHONO SOCKET PHS7

DRWG. No. **FC68400**

DO NOT SCALE

FORM: A4DRWGH

THE CONTENTS OF THIS DOCUMENT MUST NOT BE COPIED OR DISCLOSED  
TO A 3rd PARTY WITHOUT WRITTEN PERMISSION OF CLIFF UK. © 1990