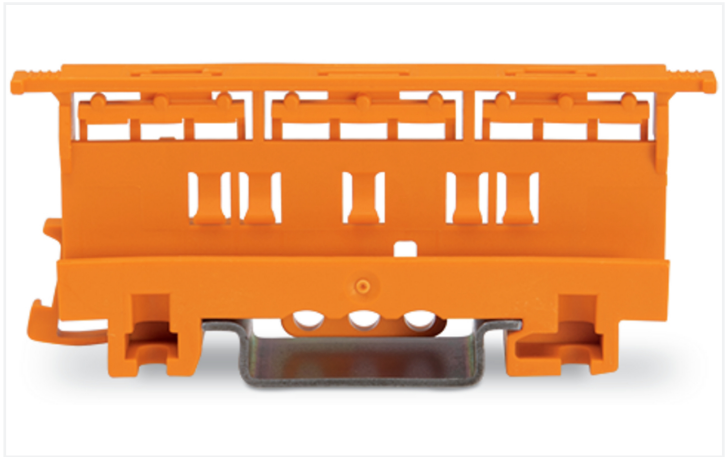
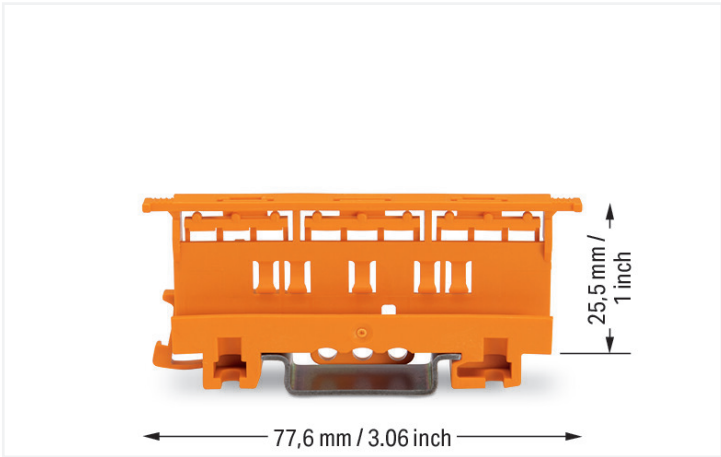




**EN:** This Datasheet is presented by the manufacturer.

Please visit our website for pricing and availability at [www.hestore.hu](http://www.hestore.hu).



Color: ■ orange

Physical data	
Width	17.5 mm / 0.689 inches
Height	77.6 mm / 3.055 inches
Depth from upper-edge of DIN-rail	25.5 mm / 1.004 inches
Depth	32 mm / 1.26 inches

Mechanical data	
Mounting type	DIN-35 rail Screw mount
Suitable	for 2-, 3- and 5-conductor 221 Series Splicing Connectors (4 mm²)


Material data	
Note (material data)	<a href="#">Information on material specifications can be found here</a>
Color	orange
Material group	I
Insulation material (main housing)	Polyamide (PA66)
Flammability class per UL94	V0
Fire load	0.294 MJ
Weight	9.8 g




Commercial data	
PU (SPU)	50 (10) pcs
Packaging type	Box
Country of origin	CN
GTIN	4055143421942
Customs tariff number	39269097900





Product classification		
UNSPSC		39121410

Environmental Product Compliance	
RoHS Compliance Status	Compliant,No Exemption

Downloads	
Environmental Product Compliance	
Compliance Search	
Environmental Product Compliance 221-500	

Documentation				
Bid Text				
221-500	19.02.2019	xml 2.72 KB		
221-500	23.01.2019	docx 14.58 KB		
ausschreiben.de 221-500				

CAD/CAE-Data	
CAD data	CAE data
2D/3D Models 221-500	EPLAN Data Portal 221-500
	ZUKEN Portal 221-500
	

1 Compatible Products
1.1 Optional Accessories
1.1.1 Marking
1.1.1.1 Marking strip



**Item No.: 210-833**  
Marking strips; 25 m on roll; 6 mm wide;  
plain; Self-adhesive; white

1.1.2 Mounting adapter

1.1.2.1 Mounting accessories



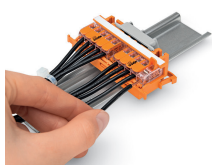
**Item No.: 222-510**  
Angled DIN-rail adapter; in combination with mounting carrier; 221-500 or 222-500; for DIN-35 rail mounting; gray



**Item No.: 222-505**  
Strain relief plate; for mounting carrier; 221 or 222 Series, can be snapped

Installation Notes

Conductor termination



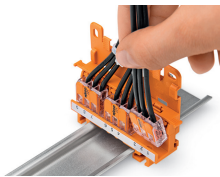
**CAGE CLAMP® connection:**  
Conductor termination with connectors fitted in a mounting carrier



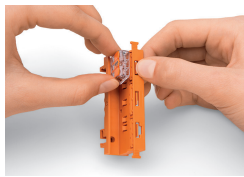
Removing a conductor.



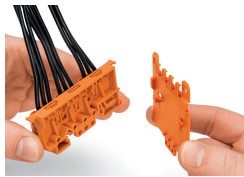
Inserting a connector into the mounting carrier.



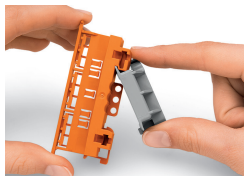
Inserting a connector into the mounting carrier.



Removing a connector from the mounting carrier.



Securing a strain relief plate (222-505) to the mounting carrier.



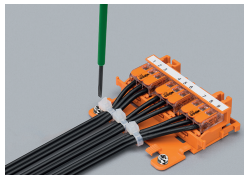
Snapping the angled DIN-rail adapter (222-510) onto the mounting carrier.



Horizontal mounting on DIN-35 rail using an angled DIN-rail adapter



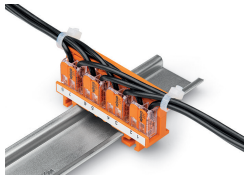
Horizontal mounting on DIN-35 rail using an angled DIN-rail adapter



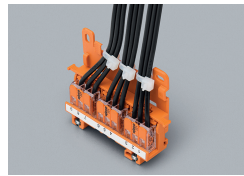
Horizontal screw mounting with strain relief plate on a flat surface



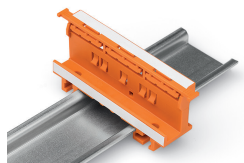
Vertical mounting with strain relief plate on DIN-35 rail



Strain relief via cable ties on the mounting carrier (transverse to the connectors' wiring direction) – clamping units labeled via marking strips (210-334)



Vertical screw mounting with strain relief plate on a flat surface



Mounting carrier on a DIN-35 rail

## Testing



Testing connectors via test slots on top of the carrier.