



EN: This Datasheet is presented by the manufacturer.

Please visit our website for pricing and availability at www.hestore.hu.

USP-G41-1.2

Pressure transducer sensor, 5VDC, max. 1.2MPa, G1/4

HESTORE no.: 100.416.22

Specifications

Working Voltage: DC 5 ± 0.5 V

Working Current: ≤ 10 mA (DC 5V)

Output Voltage: DC 0.5...4.5V

Working Pressure Rate Range: 0...1.2Mpa

Max. Pressure: 2.4Mpa

Destructive pressure: 3Mpa

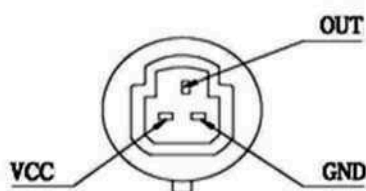
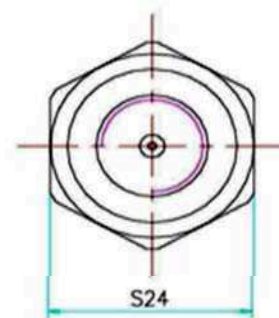
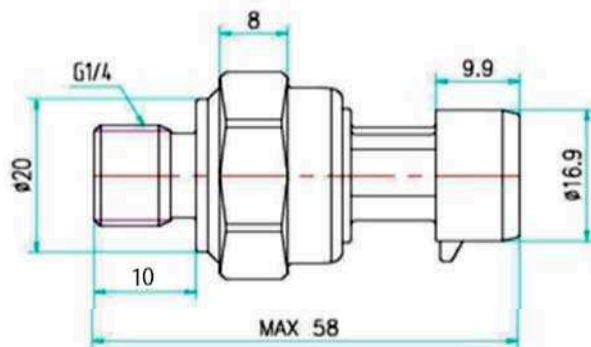
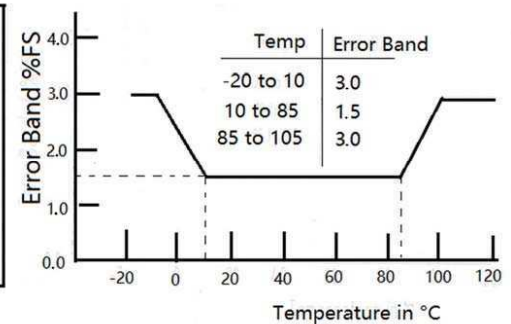
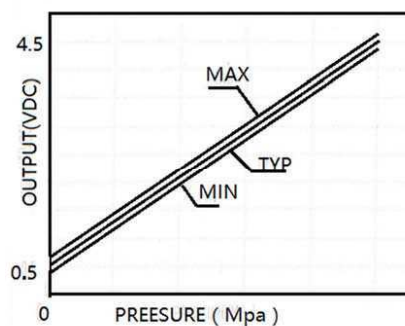
Working Temperature: 0...85°C

Storage Temperature: 0...85°C

Measurement Accuracy: $\pm 1.5\%$ FS

Response Time: ≤ 2.0 ms

IP65



VCC: RED
OUT: YELLOW or BLUE
GND: BLACK