



HESTORE.HU

elektronikai alkatrész áruház

EN: This Datasheet is presented by the manufacturer.

Please visit our website for pricing and availability at www.hestore.hu.

T-Display-S3 Specifications

MCU: **ESP32-S3R8** Dual-core LX7 microprocessor
Wireless Connectivity: **Wi-Fi 802.11, BLE 5 + BT mesh**
Programming Platform: **Arduino-ide, Micropython**
Flash: **16MB** **PSRAM:** **8MB** **Bat voltage detection:** **IO04**
Onboard functions: Boot + Reset + IO14 Button

1.9 inch ST7789V IPS TFT LCD:  **Drive Chip:** **ST7789**
Resolution: **170(H)RGB x320(V)**
8-Bit Parallel Interface, working power supply: **3.3v**
1.9" diagonal, Full color TFT Display

Support USB/Li-Po Battery Dual Power Supply

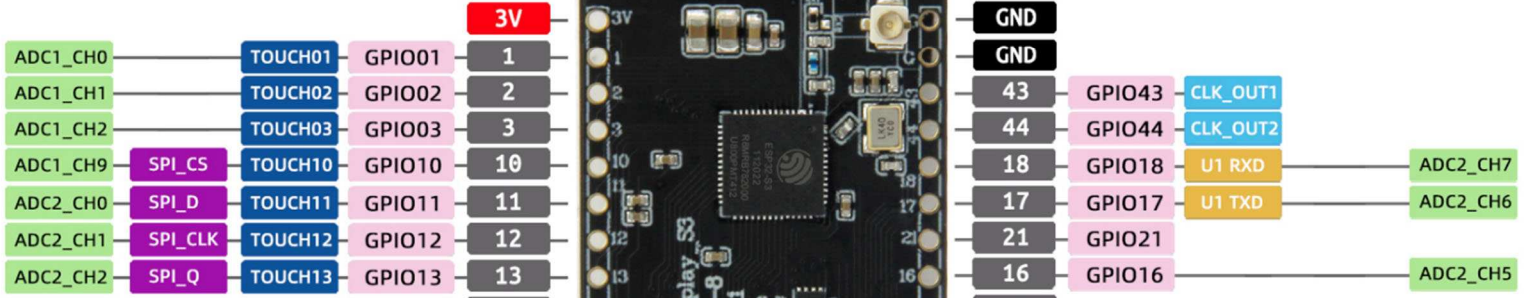


github.com/Xinyuan-LilyGO/T-Display-S3

ESP32-S3R8

WiFi + BLE

FLASH:16MB

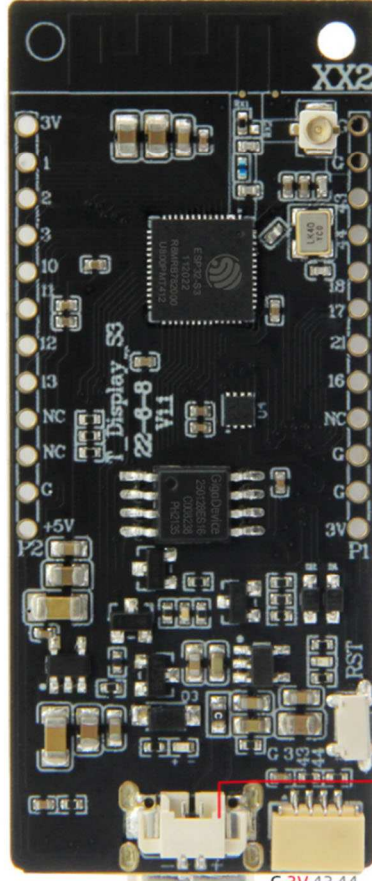


ST7789



Boot IO14
170*320 IPS LCD

- LCD_BL 38
- LCD_D0 39
- LCD_D1 40
- LCD_D2 41
- LCD_D3 42
- LCD_D4 45
- LCD_D5 46
- LCD_D6 47
- LCD_D7 48
- LCD_WR 08
- LCD_RD 09
- LCD_DC 07
- LCD_CS 06
- LCD_RES 05
- LCD_Power_On 15



Type-C

Reset

LCD_BAT_VOLT 04

LILYGO T-Display ESP32-S3

1.9 inch ST7789 Resolution 170*320 TFT IPS LCD

