

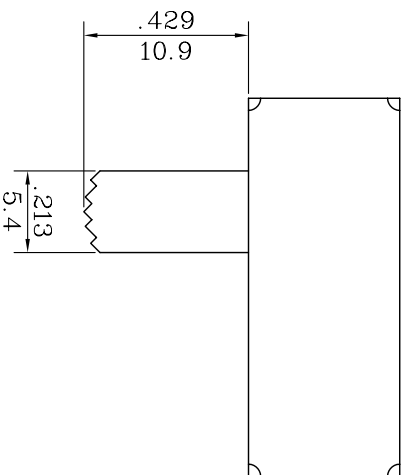


**HESTORE.HU**

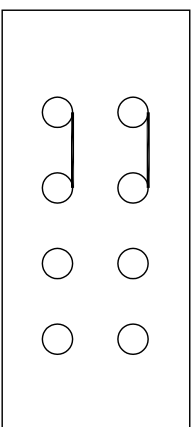
elektronikai alkatrész áruház

**EN:** This Datasheet is presented by the manufacturer.

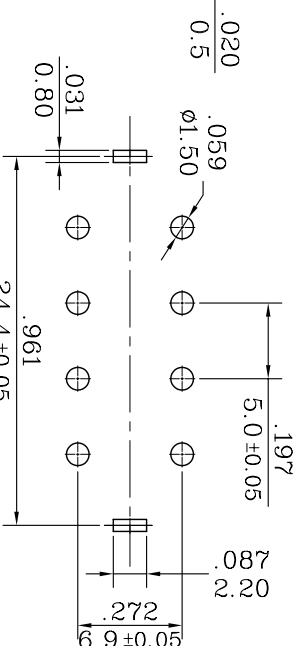
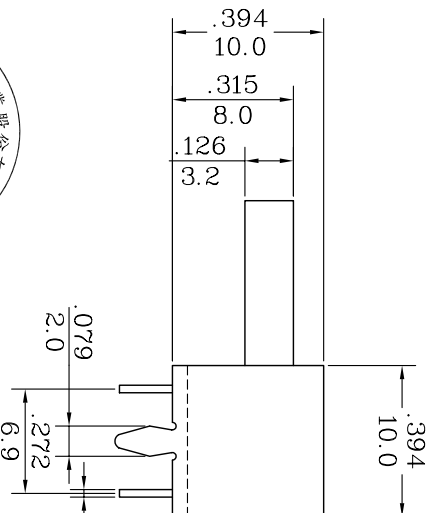
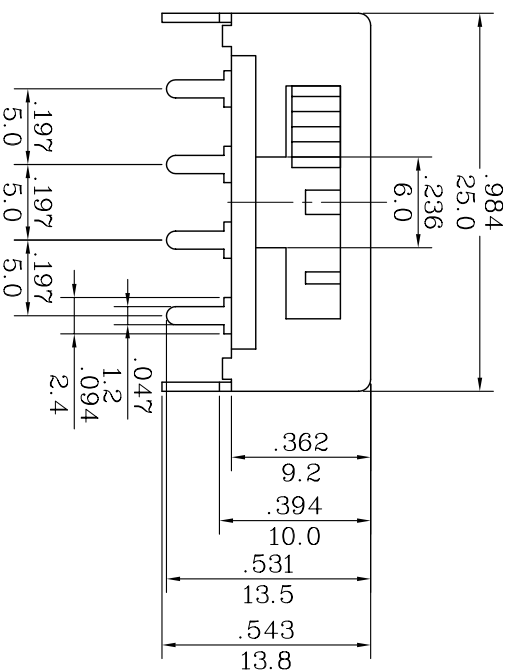
Please visit our website for pricing and availability at [www.hestore.hu](http://www.hestore.hu).



**SCHEMATIC DIAGRAM**



SLIDE SWITCH: MODEL SL13  
 RATING: 1A 125VDC  
 CIRCUIT: DOUBLE POLES TRIPLE THROW  
 CONTACT RESISTANCE: 20mΩ (MAX)  
 DIELECTRIC STRENGTH: 1000VAC FOR 1 MINUTE  
 CYCLE: 100,000.  
 OPERATION FORCE: 300±200g



**P.C. BOARD HOLE**

NOTE: TOLERANCES UNLESS OTHERWISE SPECIFIED:  $\pm .12$  (in/mm)  $\pm 0.3$

修正 REVISION	說明 DESCRIPTION	核准 APPROVAL BY	公差 TOLERANCES	.XX±0.1	.XX±0.05	角度 ANGLE	$\pm \frac{1}{2}^\circ$	單位 DIMENSION UNIT	mm	版 * VER	A版 * 次
			繪圖 DRAWN BY	設計 DESIGNED BY	比例尺 SCALE	品名 TITLE	圖號 DRAWING NO	材質 MATERIAL		處理 FINISH	
			核對 CHECKED BY	核准 APPROVED BY	日期 DATE	SL13-213C					