

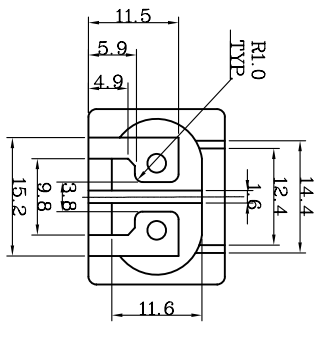
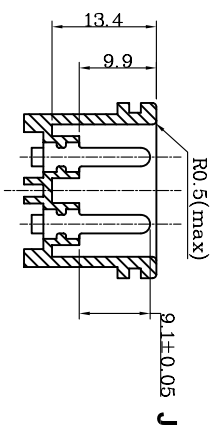
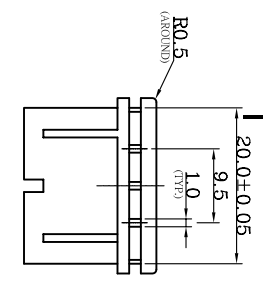
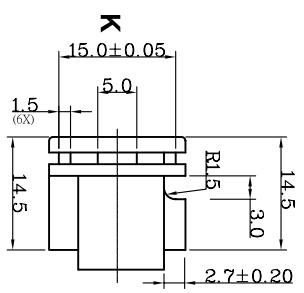
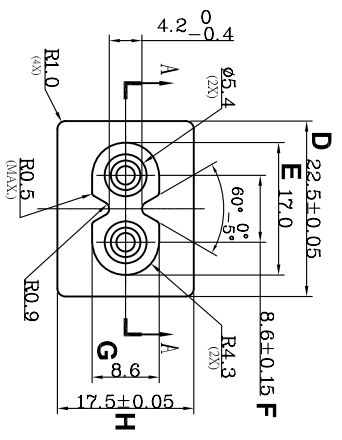
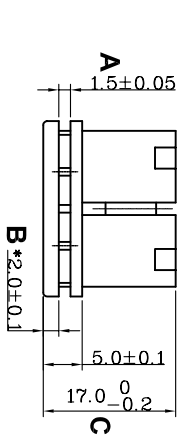


HESTORE.HU

elektronikai alkatrész áruház

EN: This Datasheet is presented by the manufacturer.

Please visit our website for pricing and availability at www.hestore.hu.



SPECIFICATION MODEL: KR-102

△ RATING: 2.5A 250VAC (UL/CUL /VDE/CCC/ SEMKO/DEMKO/NEMKO/FIMKO)
 INSULATION RESISTANCE: 100Mohm, DC 500V
 DIELECTRIC STRENGTH: 3000VAC FOR 1 MINUTE
 MEET UL 498 & IEC/EN60320 REQUIREMENTS



- NOTES:
1. MATERIAL: NAN YA 1403G3, PBT+15%GF, UL 94V-0.
 2. COLOR MUST BE APPROVED BY ENGINEER.
 3. PIN TO PIN MUST WITHSTAND 3KVAC IN 1 MINUTE MIN.
 4. DIMENSIONS MARKED * MARK MUST BE INSPECTED AND CONTROLLED STRICTLY BY IQC.
 5. THE RIVET FORCE MUST WITHSTAND 20kg/1min.
 6. THE RIVETED RINS RESISTANT MUST BE LOWER THAN 15m Ω.

REVISION	DESCRIPTION	REVISED BY	TOLERANCES	ANGLE	UNIT	PART NAME	DWG NO
△ 2005.09.28	增加安規, 重新出圖	孫斌	.X±0.1	.XX±0.05	mm	KR-102 規格圖	S0407B
△ 2004.06.17	更換圖框, 首次出圖	梁春林					