



**HESTORE.HU**

elektronikai alkatrész áruház

**EN:** This Datasheet is presented by the manufacturer.

Please visit our website for pricing and availability at [www.hestore.hu](http://www.hestore.hu).

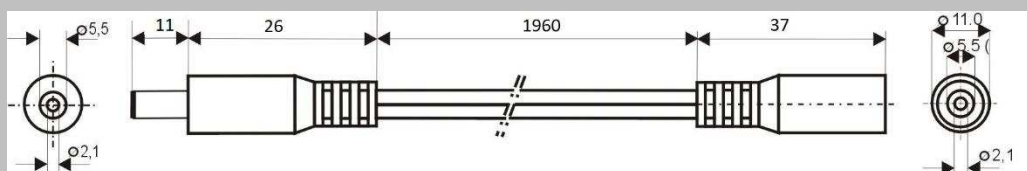
# ESPE

## LOW VOLTAGE DC CABLE



### Specification:

Model	<b>DC.INV.0200.0200E</b>
DC Plug	5,5x2,1 mm (center positive)
DC Socket	5,5x2,1 mm (center positive)
Recommended voltage	0 - 48V
Max Current	5A
Dielectric Strenght	500 VDC
Operating temperature	-20°C to +70°C
Cord Lenght	1960mm
Cable Diameter	2x2mm
Wire Diameter	2x0,5mm <sup>2</sup>
ROHS	+



Made in PRC