



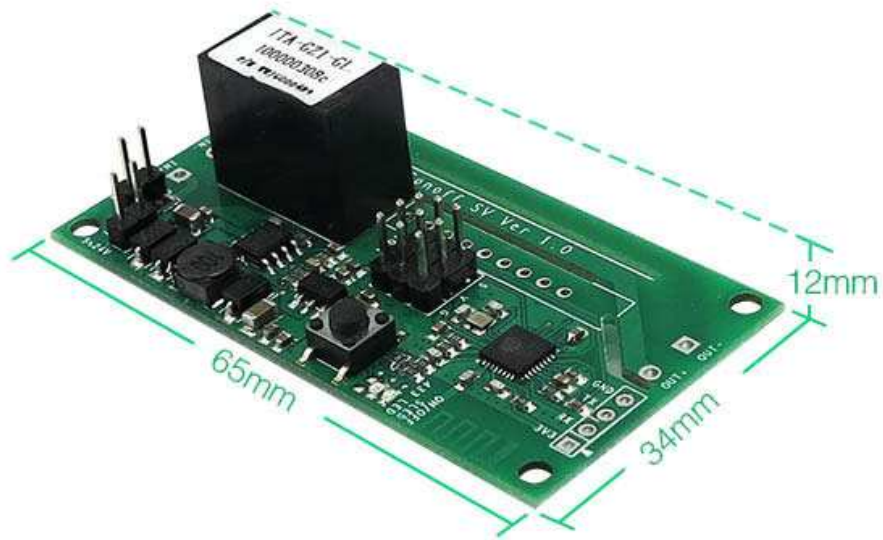
HESTORE.HU

elektronikai alkatrész áruház

EN: This Datasheet is presented by the manufacturer.

Please visit our website for pricing and availability at www.hestore.hu.

Features



5~24V power supply voltage



Tracking device status and timely remote control through APP



Setting max 8 single or repeat timing tasks each device



Fast configure SSID and password through APP



Numerous WiFi smart switches one smart phone



Automatic connect to server, register and update status info



Reserve GIPO to support secondary development

Voice Control with Amazon Alexa and Google Assistant



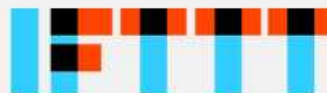
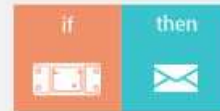
"Hey Google, turn on heater."



"Alexa, turn off light."

Works With IFTTT

IFTTT helps your devices and apps work together in new ways



Strong core

Tensilica L106

ultra-low power consumption

32-bit micro-MCU, dominant

frequency support 80 MHz and 160 MHz, support RTOS



Default mode:
WIFI circuit and relay circuit adopt the same power supply



Isolated Mode:
WIFI circuit and relay circuit can be isolated

