

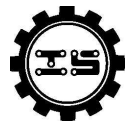


HESTORE.HU

elektronikai alkatrész áruház

EN: This Datasheet is presented by the manufacturer.

Please visit our website for pricing and availability at www.hestore.hu.



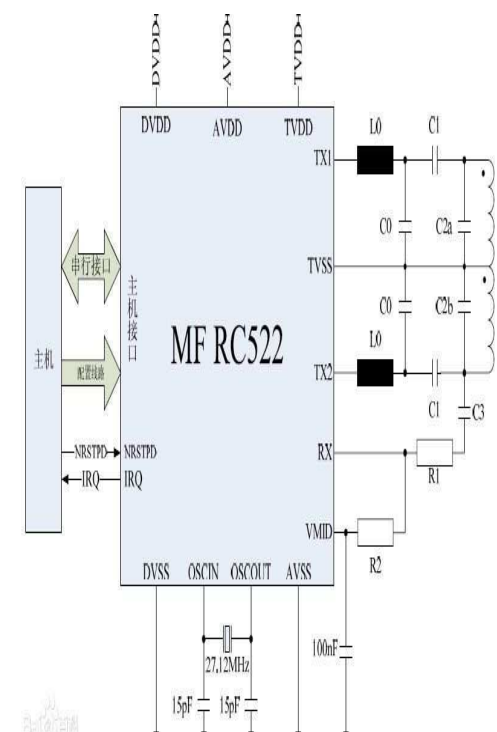
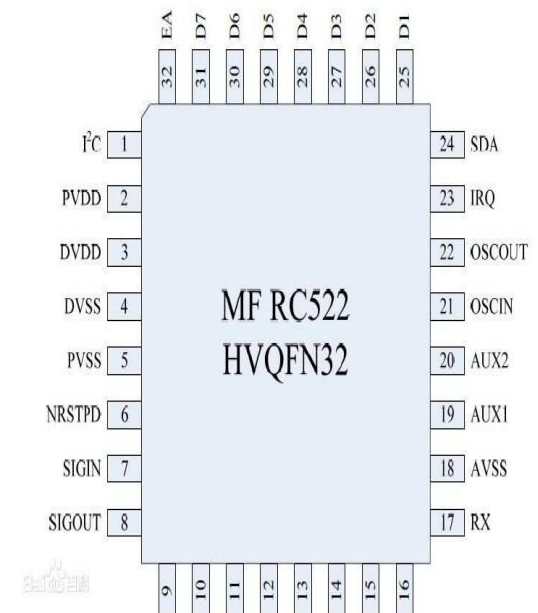
MIFARE RC522 RF module

I ,Feature=====

1).MF RC522 is applied to 13.56MHz contactless card reader communication chips a member of the high level of integration. Is NXP, for "Three Tables" application introduced a low-voltage, low-cost, small size and non-contact chip card reader is a good choice for smart meters and portable handheld devices developed.

2).MF RC522 using advanced modulation and demodulation concept completely integrated in all types of passive 13.56MHz contactless communication methods and protocols. Support ISO14443A multilayer applications. The transmitter portion of its internal communications can drive the reader antenna and ISO 14443A/MIFARE cards and answering machine, no other circuits. The receiver part provides a robust and effective demodulation and decoding circuitry for processing signals ISO14443A compatible transponders. The digital part handles ISO14443A framing and error detection (Parity & CRC). In addition, it supports fast CRYPTO1 encryption algorithm used to verify the MIFARE products. MFRC522 support MIFARE? Higher-speed non-contact communication, two-way data transfer rates up to 424kbit/s.

3).As a new member of the highly integrated 13.56MHz card reader series chip family, MF RC522 MF RC500 and MF RC530 and there are many similarities, but also have many other features and differences. It is the communication between the host and the serial communication using fewer connections, and can be based on different user needs to select one mode SPI, I2C or serial UART (similar to RS232), helps to reduce the connection, reducing the volume of PCB board and reduce costs.





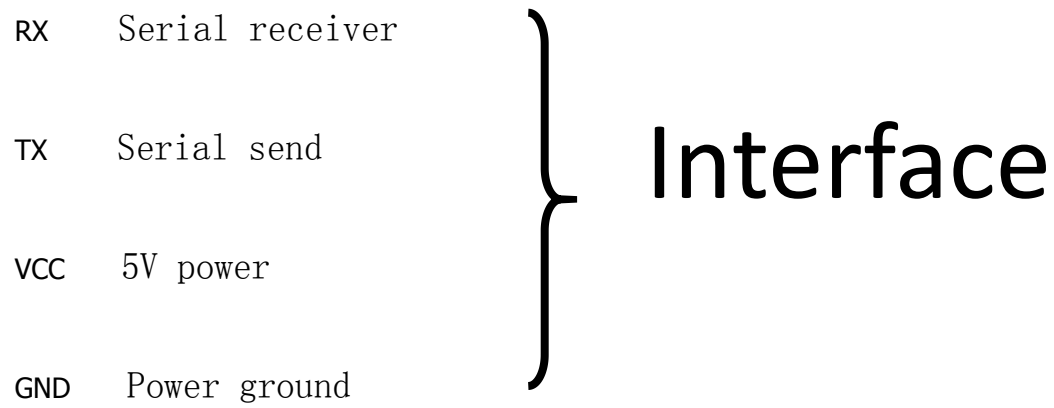
II, Applications=====

1)MF RC522 applicable to all kinds based on ISO / IEC 14443A standard and require application of low-cost, small size, high performance and power of a single non-contact communication.

- 2)Meter reading;
- 3)On-board unit;
- 4)Public transport terminal;
- 5)The portable handheld device;
- 6>Contactless public phones.

III, Parameters=====

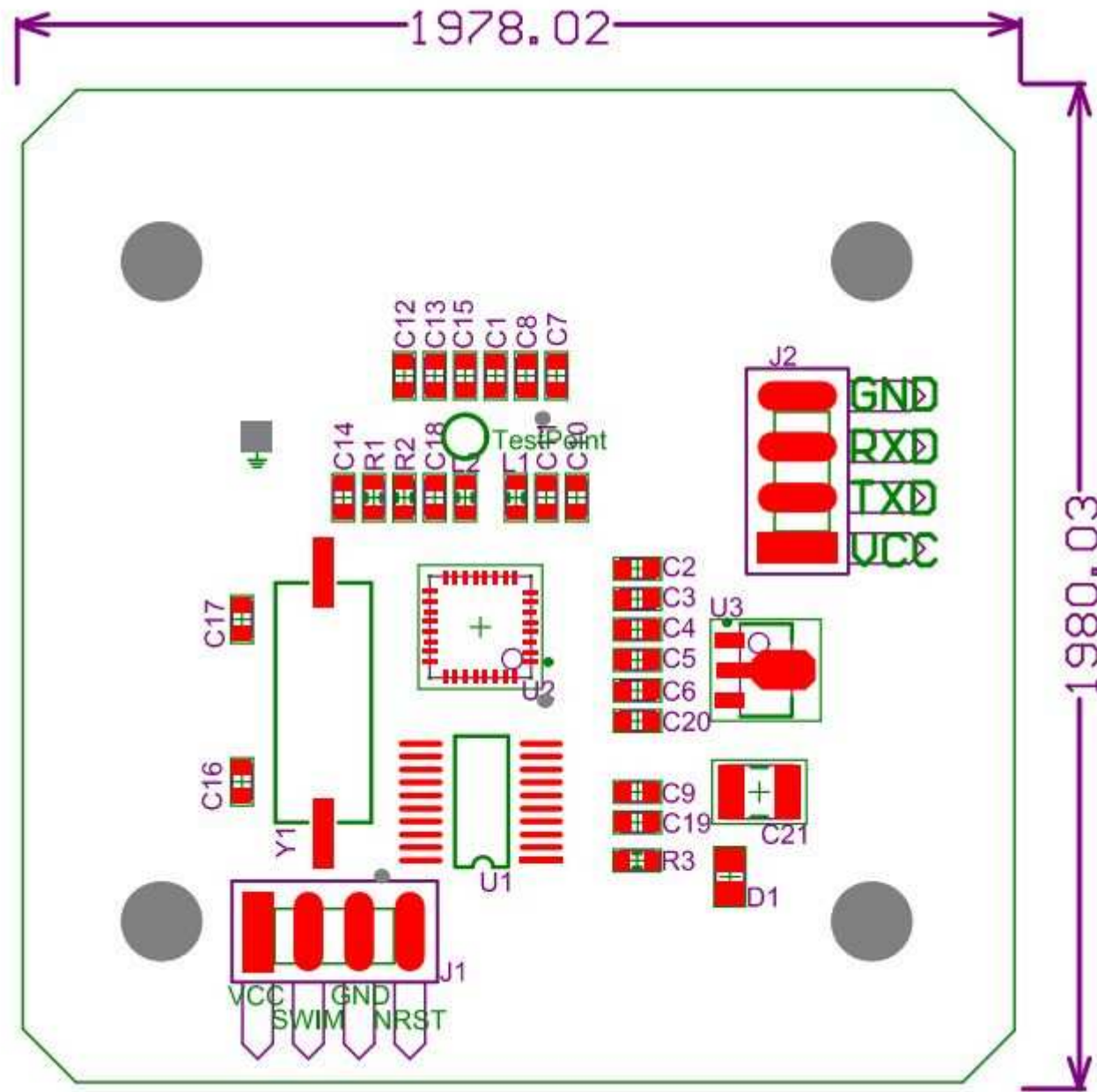
Serial Supply Voltage (VCC): 5V





IV ,Mechanical Drawings=====

Unit: mil





V, Description=====

Model: MIFARE RC522

Sleep Current: <80uA

Peak current: <30mA

Operating Frequency: 13.56MHz

Read Range: 0~45mm

Interface: UART TTL

Baud Rate: 115200

Data transfer rate: Maximum10Mbit/s

Physical Characteristics: Size: 50mm×50mm

Ambient operating temperature: Celsius-20—80

Storage Temperature: Celsius-40—85

Humidity: Relative Humidity 5%—95%

Agreement: Compliance with ISO14443A standard, support Mifare1 S50、S70



VII, Precautions=====

Try not to be placed between the card reader and the reader when any metal objects. So as not to affect the results.