



HESTORE.HU

elektronikai alkatrész áruház

EN: This Datasheet is presented by the manufacturer.

Please visit our website for pricing and availability at www.hestore.hu.

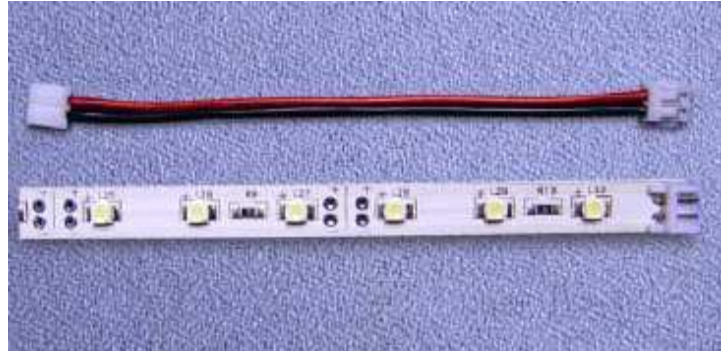


LIGHT BAR SERIES

OF-LBS3528R RED



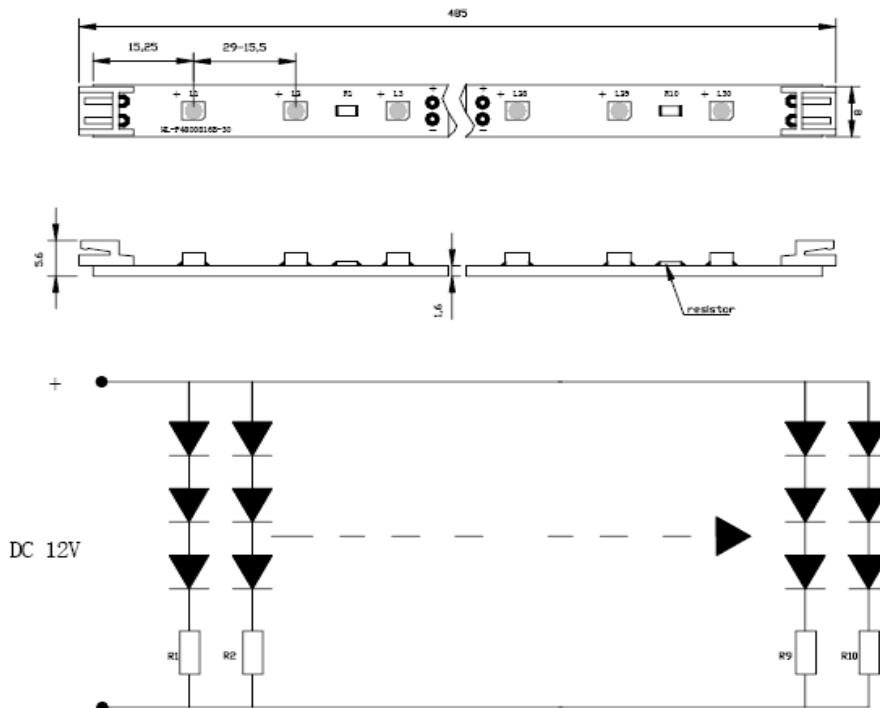
ATTENTION
 OBSERVE PRECAUTIONS
 FOR HANDLING
 ELECTROSTATIC
 DISCHARGE
 SENSITIVE
 DEVICES



Features

- 485MMX8MM SMD LIGHT BAR : 30-LED.
- PRINTED CIRCUIT BOARD THICKNESS : 1.6MM
- WORKING VOLTAGE : 12V DC.
- WORKING CURRENT: 200MA.
- LED VIEW ANGLE(2θ1/2):120°.
- PACKAGE: 1PCS / PVC TUBE.

Package Dimensions



Notes:

1. All dimension units are millimeters.
2. All dimension tolerance is ±1mm unless otherwise noted.



LIGHT BAR SERIES

Absolute Maximum Rating at TA=25°C

Parameter	Symbol	Absolute Maximum Rating	Unit
Forward Current	IF	200	mA
Power Dissipation	PD	2,4	W
Electrostatic discharge	ESD	2000	V
Operating Temperature	Tstg	-25 ~ +60	°C
Storage Temperature	Tstg	- 40 ~ + 80	°C

Electrical / Optical Characteristics at TA=25°C

Parameter	Symbol	Condition	Min	Typ	Unit
Forward Voltage DC	VF	IF=200mA		12	V
Dominant Wavelength	λ_D	IF=200mA	636	639	nm
Luminous flux	ϕ_V	IF=200mA		30	lm
Recommend Forward Current	IF(rec)	IF=200mA		200	mA

Notes:Tolerance of measurement of luminous intensity \pm 15%.

Package means



APPLICATIONS

- EDGE-LIGHTING OF TRANSPARENT OR DIFFUSED MATERIALS.
- PATH&CONTOUR MARKING.
- EMERGENCY/RESCUE SIGNS.
- TO COUPLE LIGHT INTO TRANSPARENT OR DIFFUSED GLASS .