



**HESTORE.HU**

elektronikai alkatrész áruház

**EN:** This Datasheet is presented by the manufacturer.

Please visit our website for pricing and availability at [www.hestore.hu](http://www.hestore.hu).

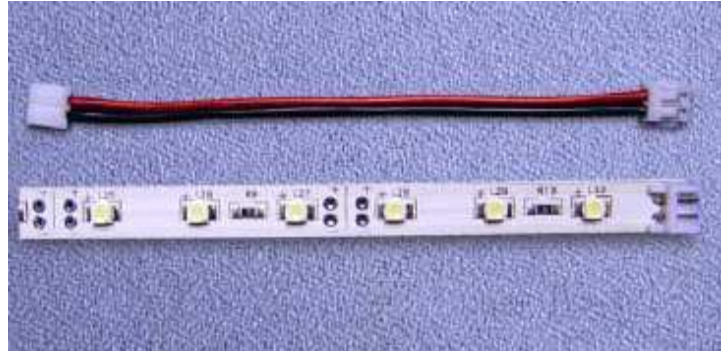


**LIGHT BAR SERIES**

**OF-LBS3528G**



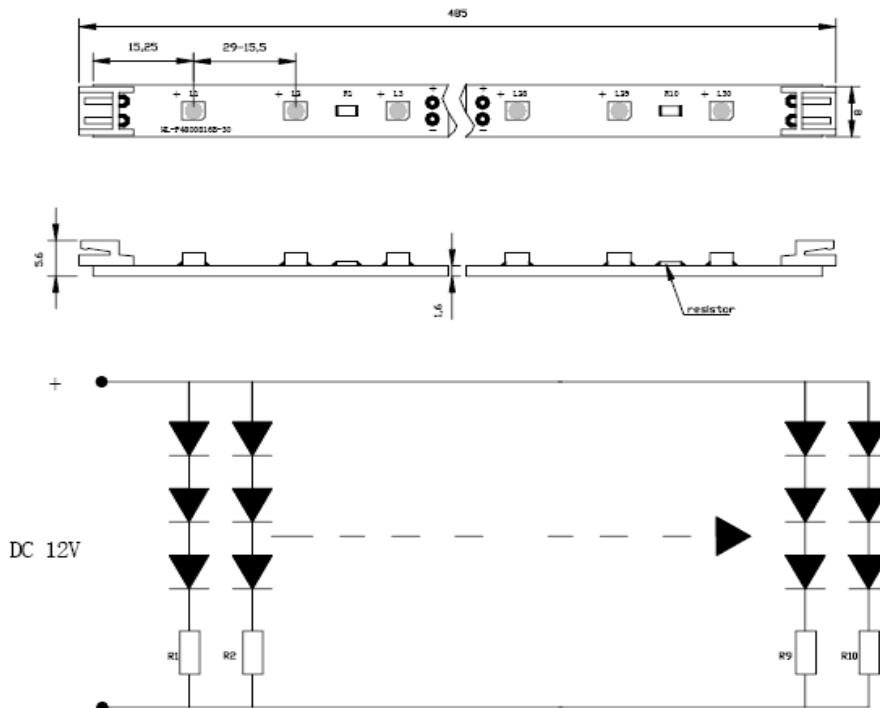
**ATTENTION**  
 OBSERVE PRECAUTIONS  
 FOR HANDLING  
 ELECTROSTATIC  
 DISCHARGE  
 SENSITIVE  
 DEVICES



**Features**

- 485MMX8MM SMD LIGHT BAR : 30-LED.
- PRINTED CIRCUIT BOARD THICKNESS : 1.6MM
- WORKING VOLTAGE : 12V DC.
- WORKING CURRENT: 200MA.
- LED VIEW ANGLE(2θ1/2):120°.
- PACKAGE: 1PCS / PVC TUBE.

**Package Dimensions**



**Notes:**

1. All dimension units are millimeters.
2. All dimension tolerance is ±1mm unless otherwise noted.



## LIGHT BAR SERIES

### Absolute Maximum Rating at TA=25°C

Parameter	Symbol	Absolute Maximum Rating	Unit
Forward Current	IF	200	mA
Power Dissipation	PD	2,4	W
Electrostatic discharge	ESD	800	V
Operating Temperature	Tstg	-25 ~ +60	°C
Storage Temperature	Tstg	- 40 ~ + 80	°C

### Electrical / Optical Characteristics at TA=25°C

Parameter	Symbol	Condition	Min	Typ	Unit
Forward Voltage DC	VF	IF=200mA		12	V
Dominant Wavelength	$\lambda_D$	IF=200mA	521	525	nm
Luminous flux	$\phi_V$	IF=200mA		55	lm
Recommend Forward Current	IF(rec)	IF=200mA		200	mA

Notes:Tolerance of measurement of luminous intensity $\pm$ 15%.

### Package means



### APPLICATIONS

- EDGE-LIGHTING OF TRANSPARENT OR DIFFUSED MATERIALS.
- PATH&CONTOUR MARKING.
- EMERGENCY/RESCUE SIGNS.
- TO COUPLE LIGHT INTO TRANSPARENT OR DIFFUSED GLASS .